



ABHILASHI DARPAN

Vol - XI, 2026

ABHILASHI GROUP OF INSTITUTIONS

NER CHOWK, TEHSIL BALH, DISTT. MANDI (H.P.)-175008

Brief History of Abhilashi Group of Institutions

A Legacy of Excellence in Education

Abhilashi Educational Society, Ner Chowk was established on 21 May, 2001 by Late Sh. T.R. Abhilashi ji who was a great visionary and socialist. Abhilashi Group of Institutions, Ner Chowk, Distt. Mandi H.P., managed by Abhilashi Educational Society and Genius Educational Society is a Group of top private technological institutions in the state of Himachal Pradesh. The Group has successfully achieved many mile stones in varied areas of Education by establishing several educational institutions namely T. R. Abhilashi Memorial Institute of Engg. & Technology, Abhilashi College of Education, Abhilashi Institute of Management Studies, Abhilashi College of Pharmacy, Abhilashi P.G. Institute of Sciences, Genius International Public School (Affiliated to CBSE, New Delhi), Chail Public School, Chailchowk (Affiliated to CBSE, New Delhi), Abhilashi College of Nursing and a world class Abhilashi University, Chail Chowk, Distt. Mandi. These aforesaid institutions have produced brilliant results during previous years and the students of these institutions / Colleges have achieved a number of ranks in first top ten positions in examinations of H.P. University, Shimla, H.P. Technical University, Hamirpur, AMRU, Nerchowk, SPU, Mandi, H.P. Takniki Shiksha Board, Dharamshala and CBSE, New Delhi.

The Abhilashi Group of Institutions has emerged as a trusted and leading name in the education sector, becoming the largest educational group in Himachal Pradesh. With state-of-the-art infrastructure and an exceptional faculty drawn from across the country, the group is dedicated to providing world-class education. Currently, over 5,000 students are enrolled in various programs, supported by a dedicated team of more than 700 staff members.

Graduates of the Abhilashi Group have achieved notable success, securing prestigious positions in both the public and private sectors. Among its distinguished alumni are State Civil Servants, Assistant Engineers, Junior Engineers from the engineering college, as well as Drug Inspectors and Pharmacists from the Abhilashi College of Pharmacy. Many Alumni of Abhilashi University are working as Ayurvedic Medical Officers, Many others have gone on to work with renowned multinational corporations and academic institutions across the globe.

In 2023, Abhilashi College of Education earned accreditation from NAAC with a B++ Grade, recognizing its outstanding infrastructure, experienced faculty, and commitment to quality education. Additionally, the T.R. Abhilashi Memorial Institute of Engineering & Technology was awarded ISO accreditation. All institutions under the Abhilashi Group are fully recognized and approved by relevant authorities, including AICTE, NCVT, PCI, VCI, NCTE, INC, HPNRC, SNC, and NCISM/AYUSH. They are also affiliated with prestigious universities such as Himachal Pradesh University (Shimla), Sardar Patel University (Mandi), Himachal Pradesh Technical University (Hamirpur), and AMRU (Nerchowk), as well as with national bodies like CBSE and the University Grants Commission (UGC).

Established in 2014, Abhilashi University, located in Chail Chowk, Mandi, has quickly become the preferred destination for students pursuing higher education. Offering over 45+ technical and professional courses, the university achieved NAAC accreditation with a B+ Grade in 2022. Abhilashi University boasts world-class facilities, including an auditorium, gymnasium, in-campus hospital, medical center, ATM, playgrounds, and spacious hostels, ensuring a comfortable and conducive environment for students. The university also emphasizes holistic development, offering a wide range of extracurricular activities to help students grow in all aspects of life.

The Abhilashi Group owes its success to the blessings of Nirankari Baba Sri Hardev Singh Ji Maharaj, Satguru Mata Savinder Hardev Ji, and the ongoing support and guidance of Satguru Mata Sudiksha Ji, whose blessings continue to inspire and guide the group towards greater heights in education.



Chairman's/ Chancellor's Message



Education serves as a transformative force, propelling progress not only within individuals but also across communities, societies, and nations. It transcends barriers of caste, creed, ethnicity, and religion, fostering critical thinking and innovative problem-solving. By equipping individuals with knowledge, skills, ethical values, and a constructive outlook, education lays the foundation for a harmonious and sustainable society.

At Abhilashi University and the Abhilashi Group of Institutions, we deeply acknowledge the pivotal role education plays in shaping the future. Guided by our mission—**“To create an environment that fosters excellence in education through leadership-driven, value-based, and industry-aligned curricula, nurturing students who are prepared to contribute to the nation's growth and development”**—we remain steadfast in our commitment to academic distinction and societal impact.

The hallmark of any distinguished educational institution lies in the calibre of its faculty and the quality of its infrastructure. I am continually inspired by the dedication of our Academic Board, which has assembled a team of subject-matter experts who embody our core vision. Our faculty members are not only intellectually accomplished but also ethically grounded, embracing a student-centric and transformative approach to teaching that ensures the holistic development of every learner.

Our state-of-the-art infrastructure—spanning academic and extracurricular domains—reflects our unwavering belief in creating an environment conducive to meaningful learning. Abhilashi University is rapidly emerging as a premier institution in North India, having secured approval from the University Grants Commission (UGC) within two years of its inception. The university is recognized under Sections 2(f) and 22 of the UGC Act, 1956, and holds accreditations from esteemed regulatory bodies including the National Commission for Indian System of Medicine, the Pharmacy Council of India, the Bar Council of India, the Himachal Pradesh Para Veterinary Council, the Veterinary Council of India, and the Indian Association of Physiotherapists. Furthermore, Abhilashi University is a proud member of the Association of Indian Universities (AIU).

Complementing the university's offerings, the Abhilashi Group of Institutions provides a diverse range of technical and professional programs such as Engineering (Degree & Diploma), ITI, Pharmacy, B.Ed. & D.El.Ed., Nursing, and Masters in Basic Sciences. These programs are duly approved by regulatory authorities including AICTE, NCVT, PCI, VCI, NCTE, INC, HPNRC, AMRU, and the Government of Himachal Pradesh, ensuring academic rigor and industry relevance.

It is with great pleasure that I extend a heartfelt welcome to all prospective students of Abhilashi University and the institutions under the Abhilashi Group. I am confident that through our comprehensive and future-focused programs, you will not only excel in your chosen disciplines but also distinguish yourselves in the global arena, realize your aspirations, and thrive in your professional journeys.

Dr. R.K. Abhilashi
Chairman/Chancellor

Abhilashi Group of Institutions/Abhilashi University

Managing Director/ Pro-Chancellor's Message



The rapidly evolving landscape of the future will be marked by both unprecedented opportunities and complex challenges. In such a dynamic environment, success will belong to those who demonstrate adaptability, embrace technological innovation, and evolve their perspectives to meet emerging realities. At Abhilashi University and the Abhilashi Group of Institutions, we recognize the imperative of preparing students to navigate the demands of the 21st century. We are deeply committed to cultivating a culture of lifelong learning—one that empowers students to thrive in a multicultural, ever-changing global society.

Understanding the transformative power of education in uplifting diverse segments of society, the Abhilashi Educational Society has established a robust network of institutions in and around Nerchowk and Chailchowk in the Mandi

District of Himachal Pradesh. Strategically located in serene, rural settings, these institutions offer students a peaceful, pollution-free academic environment that fosters focused learning and innovation. Beyond academics, this initiative also aims to enrich local communities by generating opportunities for education, employment, and entrepreneurship. The development of hostels, paying guest accommodations, grocery outlets, tea stalls, and other livelihood ventures reflects our holistic approach to community empowerment.

Our vision is unequivocal:

“To achieve excellence in professional and technical education through dedication and innovative research.”

To realize this vision, we have instituted rigorous academic standards, validated by approvals and recognitions from esteemed regulatory bodies such as the University Grants Commission (UGC) Inspection Committee and the AICTE Expert Committee. Our commitment to quality has also been endorsed by other prominent authorities including PCI, VCI, NCISM, the Himachal Pradesh State Para Veterinary Council, NCTE, HPNRC, AMRU, and the Government of Himachal Pradesh.

It is with great pleasure that I extend a heartfelt welcome to all prospective and aspiring students of Abhilashi University and the institutions under the Abhilashi Group. With the education, mentorship, and values we impart, I am confident you will excel in your chosen fields, distinguish yourselves in today's competitive world, and embark on a fulfilling and impactful career journey.

Dr. Lalit Kumar Abhilashi

Managing Director/ Pro-Chancellor

Abhilashi Group of Institutions/ Abhilashi University

Secretary's Message



The Abhilashi Group of Institutions, situated in Nerchowk, District Mandi, Himachal Pradesh, has played a transformative role in shaping the lives of countless individuals who have become part of its academic journey. For many students from underprivileged backgrounds—those driven by a strong desire to learn but constrained by limited resources—Abhilashi has emerged as a beacon of hope. We extend not only moral encouragement but also financial assistance, enabling these students to pursue higher education and realize their potential.

At Abhilashi, our commitment to student welfare transcends geographical boundaries. We take immense pride in nurturing learners from Himachal Pradesh as well as from diverse regions across India, including Sikkim, Arunachal Pradesh, Manipur, West Bengal, Karnataka, Tamil Nadu, Kerala, Maharashtra, Jharkhand, Jammu & Kashmir, Haryana, and Punjab. Our unwavering dedication ensures that every student receives the guidance, resources, and opportunities necessary to build a successful academic and professional career.

Our support extends well beyond the classroom. We remain deeply invested in the lifelong success of our students and alumni, offering continued mentorship and encouragement as they navigate their personal and professional journeys.

On behalf of the entire Abhilashi Group of Institutions and the Abhilashi University family, I extend a warm and sincere welcome to all aspiring students. We are fully committed to providing a nurturing and empowering environment—one that reflects the dynamic social, cultural, and economic realities of today's world. With your perseverance and dedication, we are confident that you will not only achieve your goals but also bring pride to the Abhilashi community.

Narender Kumar

Secretary

Abhilashi Educational Society

Management & Officers of Abhilashi Group/Abhilashi University



Dr. R.K. Abhilashi
Chairman & Chancellor AGI/AU



Dr. L.K. Abhilashi
MD & Pro-Chancellor AGI/AU



Dr. Narbada Abhilashi
Chairperson, GES
Principal, ACE



Dr. Promila Abhilashi
Vice-Chairperson, AES



Sh. Narendra Kumar
Secretary, AES



Sh. Sanjeev Kumar
Treasurer, AES



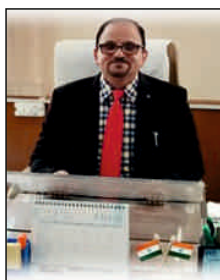
Prof. H.K. Chaudhary
Vice-Chancellor, AU



Dr. S.K. Shukla
Dean Academics, AU



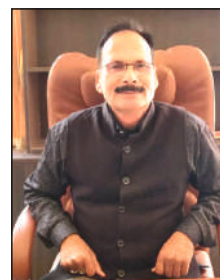
Dr. Kapil Kapoor
Registrar, AU



Sh. P.C. Thakur
COE, AU



Dr. Devender Sharma
Dean Students Welfare, AU



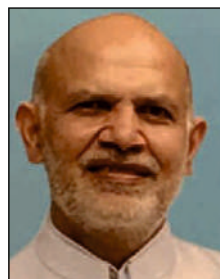
Dr. D.K. Mishra
Dean, BAMS, AU



Prof. P.C. Sharma
Dean, Agriculture, AU



Dr. D.P. Dahiya
Dean, Pharmacy, AU



Dr. Vipin K. Gupta
Dean, Veterinary, AU



Mr. Kunal Sood
Director, Training & Placements



Dr. Biplab Sarkar
Principal, TRAMIET



Dr. Rajender Guleria
Principal, ACP



Mrs. Sarita Thakur
Principal, ACN



Er. M. L. Modgil
Principal, TRAMIET (Poly)

Institutions & Courses @ Abhilashi Group of Institutions/ University

T.R. ABHILASHI MEMORIAL INSTITUTION OF ENGINEERING & TECHNOLOGY

Tanda, P.O. Balt, Distt. Mandi (H.P)

Approved By: HP Govt., AICTE and Affiliated to HPTU Hamirpur and HPTSB Dharamshala, NCVT

B.Tech in CE, EE & CSE

ITI {Electrician, Fitter, Sanitary Health Inspector

Diploma in CE & EE

Solar Technician (Electrical)}

ABHILASHI COLLEGE OF NURSING

Tanda, P.O. Balt, Distt. Mandi (H.P)

Approved By: HP Govt., INC, HPNRC and Affiliated to AMRU Nerchowk

GNM, B.Sc. Nursing, Post Basic B. Sc Nursing, M. Sc. Nursing

ABHILASHI COLLEGE OF PHARMACY

Ner Chowk, Tehsil Balh, Distt. Mandi (H.P)

Approved By: HP Govt., PCI and Affiliated to HPTU Hamirpur

B.Pharmacy

ABHILASHI COLLEGE OF EDUCATION

Ner Chowk, Tehsil Balh, Distt. Mandi (H.P)

Accredited with 'B⁺⁺' Grade by NAAC

Approved By: NCTE, Affiliated to SPU Mandi, HPBOSE Dharamshala

B.Ed, D.El.Ed

ABHILASHI P.G. INSTITUTE OF SCIENCES

Ner Chowk, Tehsil Balh, Distt. Mandi (H.P)

Affiliated to SPU Mandi

M. Sc. Chemistry, M. Sc. Botany

ABHILASHI UNIVERSITY

Chail Chowk (Chachyot), Distt. Mandi (H.P)

Accredited with 'B' Grade by NAAC

Approved By: UGC, HP Govt., NCISM/ AYUSH, NCTE, PCI, VCI, HPSPVC, SAHCHP, Member AIU

BAMS, D. Pharmacy (Ayurveda), Diploma in Yoga, B.P.T, B.Sc. in Anesthesia & Operation Theatre Tech. (B.Sc. AOTT), B.Sc. in Medical Radiology & Imaging Tech. (B.Sc. MRIT), B. Sc. MLT, Diploma Multi Purpose Health Worker, B. Sc. Agriculture (Hons), M. Sc. Agriculture (Agronomy, Horticulture (Veg. Sciences), GPB), B.V. Sc & AH, Two Years Veterinary Pharmacist Training Course, Four Years Integrated B.A. B.Ed. (ITEP) & B.Sc. B.Ed. (ITEP), B.A., B.Sc. (Medical/ Non-Medical), Diploma in Arts & Crafts, M.A. Education, Diploma in Pharmacy (Allopathy), B. Pharmacy, M. Pharmacy (Pharmaceutics, Pharmaceutical Chemistry), Pharm D., Pharm D (PB), BCA, BBA, M.B.A., Ph.D. (Pharmaceutical Sciences, Management, Education)

Abhilashi College of Nursing

Tanda, P.O. Balt, Tehsil Balh, Distt. Mandi (H.P)

Recognised By: HP Govt., Approved By: INC, HPNRC
and Affiliated to AMRU Nerchowk

Courses:

GNM, B.Sc. Nursing
Post Basic B.Sc. Nursing
M.Sc. Nursing

Abhilashi College of Nursing was established in 2015 with a vision to achieve excellence in Nursing Education and to provide quality services to the emerging health care delivery system. The college has wellexperienced excellent, dedicated faculty members who work hard for the students success and achievement. Abhilashi College of Nursing has excellent infrastructure with a conducive learning environment and hostel facilities with all the necessary amenities to support the students study. Since the Nursing profession is ultimately about caring for people, we make sure that our students get as much hands-on patient care experience as possible.



T.R. Abhilashi Memorial Institute of Engineering & Technology

Tanda, P.O. Balt, Tehsil Balh, Distt. Mandi (H.P)

Recognised By: HP Govt., Approved By: AICTE

Affiliated to HPTU, Hamirpur, HP Takniki Siksha Board, Dharamshla, NCVT, New Delhi

T. R. Abhilashi Memorial Institute of Engg. & Technology popularly known as TRAMIET is located at the serene location of Balh Valley of Mandi District and is recognized as one of the best Engineering College of the state in terms of its infrastructure, admission, placements and other amenities. There are 3 engineering trades in B. Tech and 2 in Diploma. Each department is fully equipped with modern labs and other resource facilities.

B.Tech in (Civil Engineering/ Electrical Engineering / Computer Science Engineering)

Diploma in (Civil Engineering/ Electrical Engineering)

ITI {Electrician, Fitter, Sanitary Health Inspector, Solar Technician (Electrical)}



DEPARTMENT OF MECHANICAL ENGINEERING

DEPARTMENT OF ELECTRONICS & COMMUNICATION ENGINEERING



DEPARTMENT OF ELECTRICAL ENGINEERING

DEPARTMENT OF APPLIED SCIENCE



DEPARTMENT OF COMPUTER SCIENCE ENGINEERING

DEPARTMENT OF CIVIL ENGINEERING



Abhilashi College of Nursing

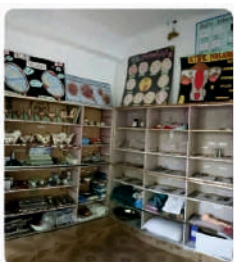
Tanda, P.O. Balt, Tehsil Balh, Distt. Mandi (H.P)

Recognised By: HP Govt., Approved By: INC, HPNRC
and Affiliated to AMRU Nerchowk

Courses:

GNM, B.Sc. Nursing
Post Basic B.Sc. Nursing
M.Sc. Nursing

Abhilashi College of Nursing was established in 2015 with a vision to achieve excellence in Nursing Education and to provide quality services to the emerging health care delivery system. The college has wellexperienced excellent, dedicated faculty members who work hard for the students success and achievement. Abhilashi College of Nursing has excellent infrastructure with a conducive learning environment and hostel facilities with all the necessary amenities to support the students study. Since the Nursing profession is ultimately about caring for people, we make sure that our students get as much hands-on patient care experience as possible.



Abhilashi College of Pharmacy

Ner Chowk, Tehsil Balh, Distt. Mandi (H.P)

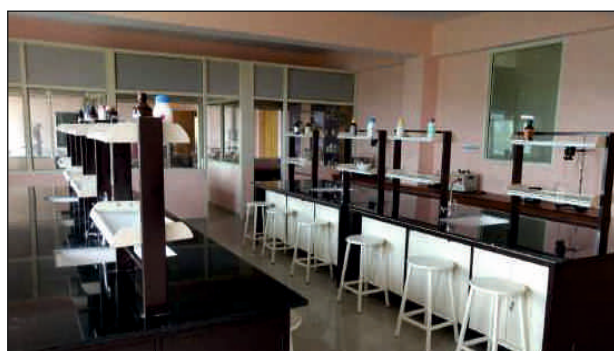
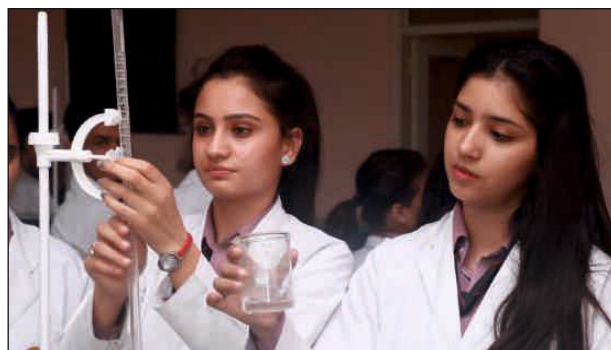
Recognised By: HP Govt., Approved By: AICTE, PCI and Affiliated to HPTU, Hamirpur

COURSE: B. Pharmacy

Abhilashi college of Pharmacy is one of the pioneer Pharmacy college of North- India and is recognized as one of the finest Pharmacy college providing the best ever infrastructure, qualified & experienced staff, modern labs, library and students recreation center. Abhilashi College of Pharmacy produces the excellent examination results and its students always make their place in merit position.



Placements: On account of its reputation and shining results many pharmaceutical companies visit the campus and recruit the students at various positions on attractive salary packages. Companies which have visited the campus for recruitment are - Cipla, Glaxo, Ranbaxy, Sun Pharma, Glenmark, Mankind Pharma and many more. In past years its students got selected in H.P Govt. as Drug Inspector and Pharmacists.



Abhilashi University

Established by Govt. of Himachal Pradesh vide "Abhilashi University (Establishment & Regulation) Act, 2014" and recognized by UGC under section 2 (f) and 22 (1) of the UGC Act, 1956, Member of AIU, Approved by: AICTE, NCISM, PCI, NCTE etc. 'B' Accredited by NAAC

Chail Chowk, Tehsil Chachyot, Distt Mandi (HP)



Abhilashi University at Chail Chowk, Distt Mandi is established by the Govt. of Himachal Pradesh and is recognized by various councils and regulatory bodies viz. UGC, NCISM, PCI, VCI, NCTE, HPSPVG, SAHCHP etc. The campus of the university is located at Chail Chowk near Mandi and is surrounded by lush green fields, pine and oak forests. It is an ideal place for study as it provides a clean, peaceful and healthy environment to its students. The campus is spread over more than 50 acre land and comprises around 10 departments offering quality education at UG, PG and Doctorate level.

The University has recruited well qualified and experienced staff from across the country like Tamil Nadu, Rajasthan, Maharashtra, Punjab, Himachal Pradesh, Uttar Pradesh, Bihar, Haryana etc and also students from various states of the country have been studying in the university giving it a multicultural venue for the students.

The various faculties of the university offering various courses are:-

S.No	Faculty	Department	Courses
1.	Faculty of Ayurveda & Health Sciences	School of Ayurveda	BAMS, D.Pharmacy (Ayurveda), Diploma in Yoga
		School of Health Sciences	B.Sc. Anesthesia and Operation Theatre Technology, B.Sc. Medical Radiology & Imaging Technology, B.P.T, B.Sc. MLT, Diploma in Multi Purpose Health Worker
2.	Faculty of Agriculture	School of Agriculture	B. Sc. Agriculture (Hons), M. Sc. Agriculture (Agronomy, Genetics & Plant Breeding, Horticulture (Veg. Sciences)
3.	Faculty of Veterinary Sciences	School of Veterinary Sciences	5 ½ Years B.V.Sc. & AH, 2 Years Veterinary Pharmacists Training Course
4.	Faculty of Pharmacy	School of Pharmacy	D. Pharmacy (Allopathy), B. Pharmacy (Allopathy), M. Pharmacy (Pharmaceutics/ Pharmaceutical Chemistry), Pharm D. Pharm D (PB), Ph.D Pharmaceutical Sciences
5.	Faculty of Engineering & Management	School of Engineering & Management	BCA, B.B.A., M.B.A.
6.	Faculty of Education, Basic Sciences & Humanities	School of Education	4 Years Integrated B. A. B. Ed./ B. Sc. B. Ed. (ITEP), MA Education, Ph. D. Education
		School of Basic Sciences	B.Sc. (Medical/Non-Medical)
		School of Humanities	Diploma in Arts & Craft, B.A.

BA B.Ed/ B.Sc. B.Ed (ITEP)

All about 4 years integrated course



- The BA B.Ed /B.Sc B.Ed (ITEP) program is a double degree in the specified course and will complete in four years only.
- Along with the advantage of saving one year, it will also save money.
- After completion of the course student will be eligible for teaching profession.
- The BA B.Ed /B.Sc B.Ed (ITEP) graduates have a choice of different PG courses like M. Ed, MBA, PG Diploma (Management) courses PG Diploma (Teaching Training) courses and MA, Allied services and Administrative services. They may take up courses related to teacher training.

Abhilashi College of Education & P.G. Institute of Sciences

Ner Chowk, Tehsil Balh, Distt. Mandi (H.P)

Accredited with 'B⁺⁺' Grade by NAAC

Approved By: NCTE, Affiliated to HPU Shimla, SPU Mandi

The campus of Abhilashi Group of Institutions at Ner Chowk, Distt. Mandi (H.P.) offers courses like B.Ed, D.El.Ed, M.Sc in Chemistry and Botany. The Institutions have well developed infrastructure, having modern amenities available for the students.

COURSES OFFERED:

B.Ed
D.El.Ed

M.Sc Chemistry
M.Sc. Botany



Innovative Projects by Students of AU/AGI

The Students of Abhilashi Group of Institutions and Abhilashi University have always brought laurels and pride to the institution by making and designing innovative projects under the guidance of their worthy and learned teachers.

The students have come out victorious in various technical events of other reputed institutions including IIT Roorkee, IIT Kharagpur and IIT Mandi etc. The students of Abhilashi University have also got their projects patented based on new technologies and current issues. One patent by a Student of Abhilashi University was telecasted on News 18 National TV Channel.

Some glimpses of the innovative projects developed by students in different events are displayed below:



Co-curricular Activities in AGI/AU

Abhilashi Group of Institutions & Abhilashi University have always supported the co-curricular activities that extract the best sports persons among the students and cultivate the real sportsman spirit in the students. Abhilashi Group of Institutions organizes its Annual Tech-Fest, Annual Sports Meet and various cultural activities like Fresher's Party, Teacher's Day, World Health Day, Yoga Day etc to ensure the all round development of students.



Social Work Initiated by AGI/AU

Abhilashi Group of Institutions and Abhilashi University, since its inception has been actively involved in social work as it has been the vision of Abhilashi Group of Institutions / Abhilashi University that if an individual is aware then a good society will flourish around. The students of Engineering, Pharmacy, Ayurveda, Agriculture use to go in the villages and train the villagers with the latest technologies. Students of Ayurveda organize various medical and health camps along with the teachers and provide free medical check ups and diagnosis to the villagers. Abhilashi Group is always with the economically deprived sections of society and makes donations liberally.



अभिलाषी नर्सिंग कालेज की तीन प्रशिक्षु नर्सिंज टाट टेन में



नावर लखवतदा नरसिंह

प्रियापारक नर्सिंजादी वही परीक्षाची में अभिलक्षणो नर्सिंज कोलेज वाठार को प्रशिक्षण देवा में एक आर सहाय्य प्रशिक्षण में टाट टेन में जलान कर निमिता । नर्सिंजकारक करवा एव 2023-25 को दो तिमासी नर्सिंज प्रमाणिक शिक्षण विद्यार्थी सुभाकर म्हाड्या में पुरस्का में लेलासा अम्मान इतिहास ही। नागरक कामने की पहिलया नर्सिंजादीकोली की अलोला में छळा स्थान प्राप्त किया है। वही आर प्रमुख प्रमाणिक शिक्षण विद्यार्थी को उपरा नर्सिंजादी नर्सिंज कारकी को डी प्रशिक्षण नर्सी में अपराडी उपाचारविधायक को सेवा अनिमित्त प्रभावकर्मी में अनीता प्रबन्धन को निमित्त है।

आ रीच ला पोरी,
निवेदिका
डा हा र ता त
अभिलाषा, डा
महेश अभिराम,
डा प्रोविद्या
अभिलाषा, राखिव
गुप्ता, बाबाए,
नीताप, कल्याणी,
नामक, प्रभाकराणी,
सौमिका
साहित्यिक उपाचारविधायी
कुमार, कलिने अम्मानकार व टाटटेन
में प्रज्ञापन में अम्मान कोलेज
पर कामने प्रमाणिक की कार्यवाही
उपाचार एव नर्सिंजादी में इसी तरह
सफाई ठाणे की कामना थी।

आर अभिलाषी में फ्री क्लास
अभिरामो चण्डू म्हाड्या पराडी
नर्सिंजादी में यक्षुदी के निमित्त विद्यार्थी
अम्मान कोलेज होस्टेल थारा रहा है।
इतिहास कोलेज प्रमुख गुरुजी का
है। प्रमाणिक शिक्षण विद्यार्थी को उपरा
नर्सिंजादी नर्सिंज कारकी को डी प्रशिक्षण
नर्सी में अपराडी उपाचारविधायक को सेवा
अनिमित्त प्रभावकर्मी में अनीता प्रबन्धन को
निमित्त है।

[illegible][illegible]

महाराष्ट्र के मुख्यमंत्री उद्धव ठाकरे ने बुधवार को कहा कि राज्य सरकार ने पिछले 10 सालों में 10 लाख करोड़ रुपये का निवेश किया है, जो कि देश के अन्य राज्यों की तुलना में बहुत अधिक है। उन्होंने कहा कि यह निवेश राज्य की विकास और जनता के कल्याण के लिए किया गया है।

2023

NATIONAL RANKING FRAMEWORK

STATE PHYSIOTHERAPY COLLEGE RANKING

This is to certify that

bhbilashi University

Ranked for

ZONE RANK
18


STATE RANK
2

PHIOTHERAPY COLLEGES (PVT)

www.ichnranking.com

Under supervision and for
ICF Career for Institutional Research (ICIR)
New Delhi

ICIR/2023/PA/2023/01/01/01/01/01/01



Award and Recognition

It has been the legacy of Abhilashi Group of Institutions that it has its glorious past as students of Abhilashi Group have achieved many milestones by grabbing various jobs in government and public sectors. The employees of Abhilashi Group are very learned and innovative which help the students in getting their goals of career.

On account of the excellent services being rendered by Abhilashi Group of Institutions and Abhilashi University, many NGOs, trusts and Govt have awarded the institutions from time to time with various awards.



Engineering & Pharmacy Colleges of Abhilashi Group are known as the best colleges of H.P.

Scholarship Assistance

Benefits to the students given by Abhilashi Group of Institutions/AU:

Abhilashi Group of Institutions and Abhilashi University provide Assistance / Scholarship* to SC and ST students under Post Matric Scholarship scheme of Govt.

MUKHYA MANTRI SUKH AASHRAY YOJNA*

Five Students are provided with free education under this scheme in Abhilashi Group of Institutions and Abhilashi University

List of Scholarship Available to Students in Abhilashi Group of Institutions and Abhilashi University:

TYPES OF SCHOLARSHIP *
POST MATRIC SCHOLARSHIP (PMS) TO SC/ST
POST MATRIC SCHOLARSHIP (PMS) TO COBC
POST MATRIC SCHOLARSHIP (PMS) OBC
KALPNA CHAWALA CHHATRAVRITI YOJNA
DR. AMBEDKAR POST MATRIC SCHOLARSHIP SCHEME FOR ECONOMICALLY BACKWARD
NATIONAL SCHOLARSHIP PORTAL (NSP)
PMS SCHEME

*Terms & Conditions Apply

For Scholarship queries you may contact on 7018251238, 9817116311, 01905-248198

Note: Abhilashi Group of Institutions/ University gives first priority to their students for the job in Abhilashi Group. Students who have completed their course from Abhilashi Group are doing job in the same group at various teaching and non-teaching positions.

Admission Criteria in Abhilashi Group of Institutions

Ner Chowk, Tehsil Balh, Distt. Mandi (H.P.)

All courses are Approved by AICTE, PCI, INC, SNRC, NCTE etc. &

Affiliated to HPU Shimla, SPU Mandi, AMRU Nerchowk, HPTU, Hamirpur, HPBOSE and H.P.T.S.B. Dharamshala

Sr.No.	Name of Institution	Course	Admission Criteria
1.	T. R. Abhilashi Memorial Institute of Engineering & Technology Tanda, P.O. Balt, Tehsil Balh, Distt. Mandi (H.P.)	B.Tech. (CE, CSE, EE)	10+2(Non Med.) 45 % with JEE / HPCET Or 45% for Gen./ 40% for Reserve. (without HPCET/JEE)
		Diploma in Engineering (CE, EE)	10 th with PAT/ 35% for all Category
		ITI {Electrician, Fitter, Sanitary Health Inspector, Solar Technician (Electrical)}	10 th Pass
2.	Abhilashi College of Pharmacy Ner Chowk, Tehsil Balh, Distt. Mandi (H.P.)	B.Pharmacy	10+2 (Science) having 45% with HPCET or 45% for General category and 40% for Reserve Category (without HPCET)
3.	Abhilashi P.G Institute of Sciences Ner Chowk, Tehsil Balh, Distt. Mandi (H.P.)	M.Sc. (Chemistry & Botany)	B.Sc. with 45% for Gen. and 40% for Reserve Category
4.	Abhilashi College of Education Ner Chowk, Tehsil Balh, Distt. Mandi (H.P.)	B.Ed.	B.A / B.Sc, B.Com with 50% for Gen. and 45% for Reserved category and HPCET
		D.El.Ed	10+2 with 50% for Gen. and 45% for Reserve Category
5.	Abhilashi College of Nursing Tanda, P.O. Balt, Tehsil Balh, Distt. Mandi (H.P.)	B.Sc. Nursing	10+2 (Medical)
		G.N.M.	10+2 Pass (Any Stream)
		Post Basic B.Sc. Nursing	Passed GNM
		M.Sc. Nursing	B.Sc. Nursing/ Post Basic B.Sc. Nursing

** Admission Criteria as per norms of H.P. Govt.

Admission Criteria in Abhilashi University

Chail Chowk, Tehsil Chachyot, Distt. Mandi (H.P.)

Courses Approved by PCI, VCI, NCISM/ AYUSH, NCTE, SAHCHP, HPSPVC etc. University Approved by UGC, Member AIU Accredited by NAAC with 'B' Grade

Sr.No	Courses	Admission Criteria
1.	D .Pharmacy (Allopathy)	10+2 (Science)
2.	B. Pharmacy (Allopathy)	10+2 (Science) 45% with HPCET or 45% for General and 40% for reserved category (without HPCET)
3.	M. Pharmacy	B. Pharmacy with 55% (50% for Reserve Category)
4.	PharmD.	10+2 (Science)
5.	Pharm D. (Post Baccalaureate)	B. Pharmacy
6.	B.Sc (Hons) Agriculture	10+2 (Science) with 50% (45% for Reserve Category) or 10+2 (Science)
7.	M.Sc Agriculture	B. Sc Agriculture / B.Sc .Horticulture
8.	B.V.Sc. & AH	10+2 (Medical with 50% Marks) with NEET
9.	2 Years Diploma in Veterinary Pharmacist	10+2 (Medical) with 55% marks
10.	BAMS	10+2 (Medical) 50% with NEET
11.	D. Pharmacy (Ayurveda)	10+2 (Any stream)
12.	B.P.T.	10+2 (Medical)
13.	B. Sc Medical Lab. Technology	10+2 (Medical)
14.	B.Sc. Anesthesia and Operation Theatre Technology	10+2 (Medical)
15.	B.Sc. Medical Radiology & Imaging Technology	10+2 (Medical)
16.	Diploma in Multipurpose Health Worker	10+2 (Any stream)
17.	Diploma in Yoga	10+2 (Any stream)
18.	4 Years Integrated BA B.Ed. B.Sc. B.Ed (ITEP)	10+2 (Any stream) / 10+2 (Science)
19.	B.Sc.	10+2 (Science)
20.	B.A.	10+2 (Any stream)
21.	Diploma in Art and Crafts (Drawing Master)	10+2 (Any stream) with 50%
22.	BBA, BCA	10+2 (Any stream)
23.	M.B.A.*	Graduation (all stream) with 50% or GMAT
24.	Ph.D (Pharmacy ,Management, Education)	Master Degree with 55% in Relevant Subject

* Executive / Part Time ** Admission Criteria as per norms of H.P. Govt.

NOTES

CAMPUS TOUR



CONTACT:

Dr. R. K. Abhilashi (Chairman & Chancellor)

94180-06520, 98164-00520

Dr. L. K. Abhilashi (Managing Director)

94180-56520, 98167-00520

Sh. Narender Kumar (Secretary)

94184-53239, 98160-05139

HELPLINE NUMBERS

**98056-13939, 98161-02238,
01905-248191, 248194, 248198, 248539, 243328
01907-250405**

WEB DETAILS

Website: www.tramiet.in, www.abhilashi-edu.in,
www.abhilashiuniversity.ac.in

Email: info@abhilashiuniversity.ac.in