

RESOURSE CENTRE
1440.00 Sq. Feet

00. Ground Floor Plan

1
1 : 100

Secretary
Abhilashi Educational Society
Ner-Chowk, Distt. Mandi (H.P.)

Architect
B.R. Rahi
No. CA/2002/29975

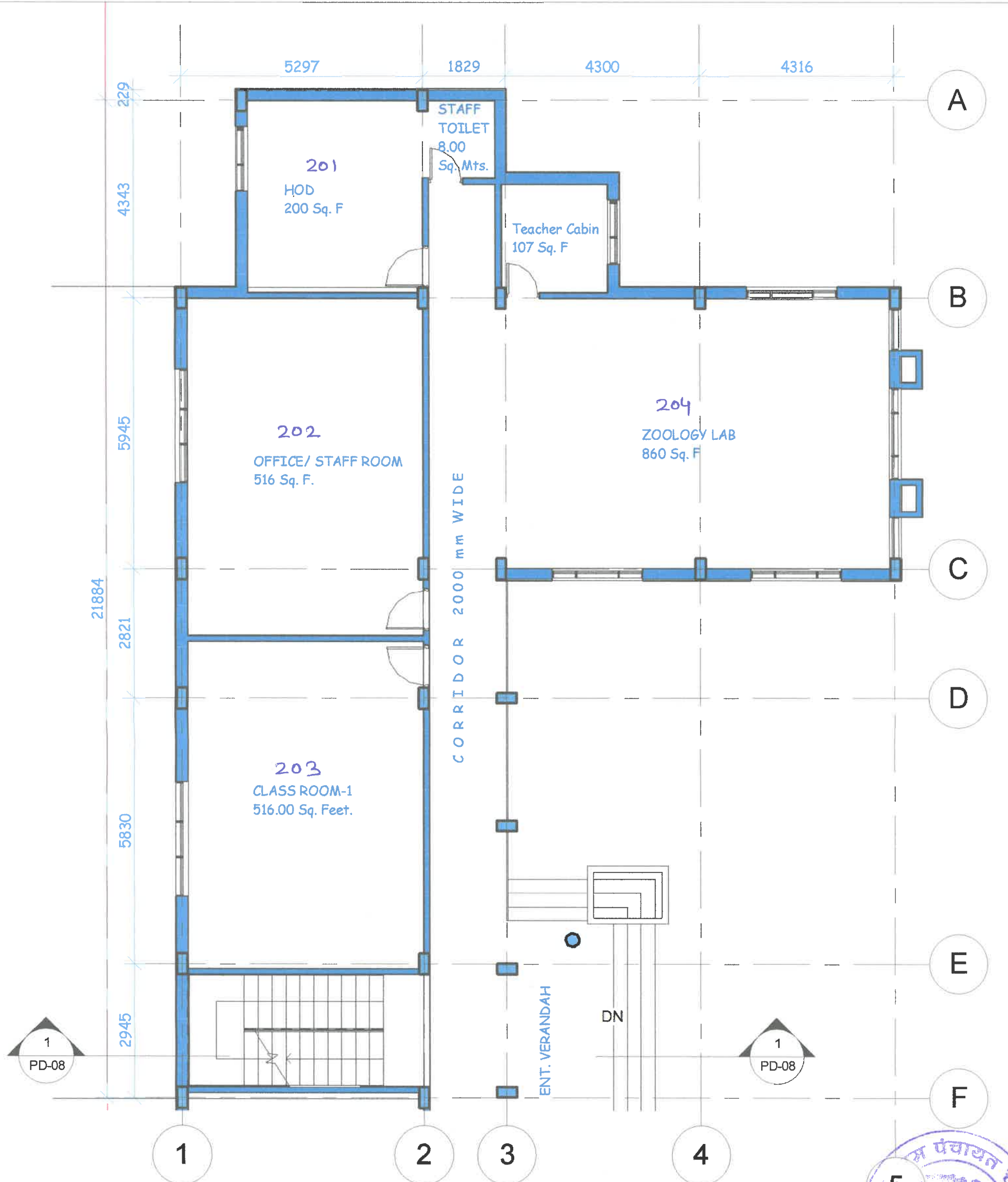


Project Name
DEPTT. OF EDUCATION & SCIENCES (ITEP)
COURSE, ON KH. NO. 403,65,67,74
IN THE CAMPUS OF ABHILASHI UNIVERSITY,
CHAILCHOWK, MANDI, H.P. (TOTAL LAND
AREA= 5092.00 Sq. Mtrs +3191.00 Sq. Mtrs)

AREA STATEMENT:-		BLOCK-N
GROUND FLOOR:	160.00 Sq.M	
FIRST FLOOR:	230.00 Sq.M	
SECOND FLOOR:	220.00 Sq.M	
THIRD FLOOR:	220.00 Sq.M	
FOURTH FLOOR:	220.00 Sq.M	
TOTAL COVERED AREA:	1050.00 Sq.M	
	OR	11298.00 Sq.F

Drg. No.
PD-01

Date
Scale As Mentioned



1. First Floor Plan

1 : 100



Project Name
 DEPTT. OF EDUCATION & SCIENCES (ITEP)
 COURSE, ON KH. NO. 403,65,67,74 IN THE
 CAMPUS OF ABHILASHI UNIVERSITY,
 CHAILCHOWK, MANDI, H.P. (TOTAL LAND
 AREA= 5092.00 Sq. Mtrs + 3191.00 Sq. Mtrs)

Secretary
 Abhilashi Educational Society
 Chailchowk, Distt. Mandi (H.P.)

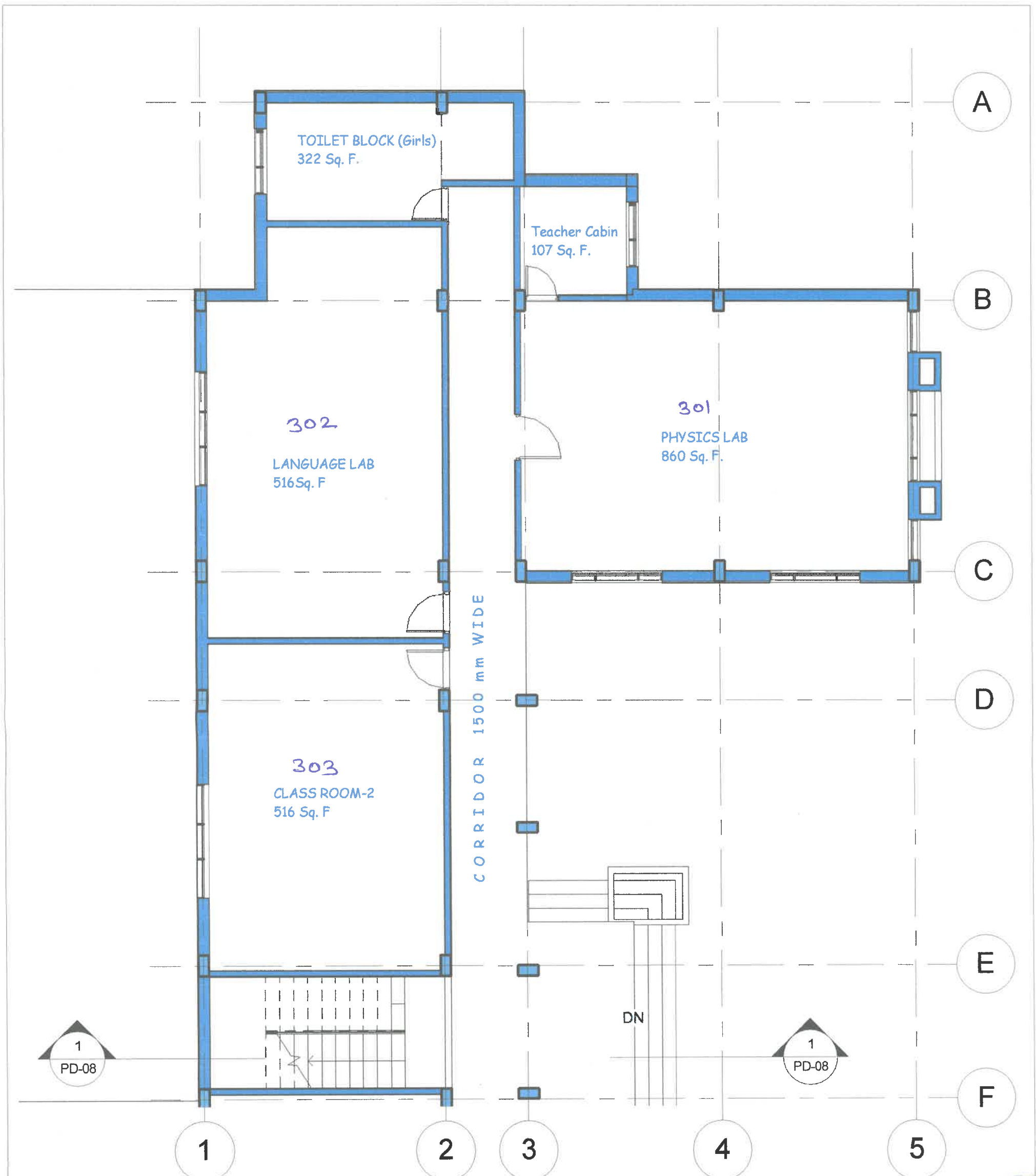
AREA STATEMENT:-

BLOCK-N

Architect
 B.R. Rahi
 No. CA/2002/29975

Drg. No.
 PD-02

Date
 Scale As Mentioned



2. Second Floor Plan

1 : 100



Project Name
 DEPTT. OF EDUCATION & SCIENCES (ITEP)
 COURSE, ON KH. NO. 65,67,74
 IN THE CAMPUS OF ABHILASHI UNIVERSITY
 CHAILCHOWK, MANDI, H.P. (TOTAL LAND
 AREA= 5092.00 Sq. Mtrs + 3191.00 Sq. Mtrs)

AREA STATEMENT:-

BLOCK-N

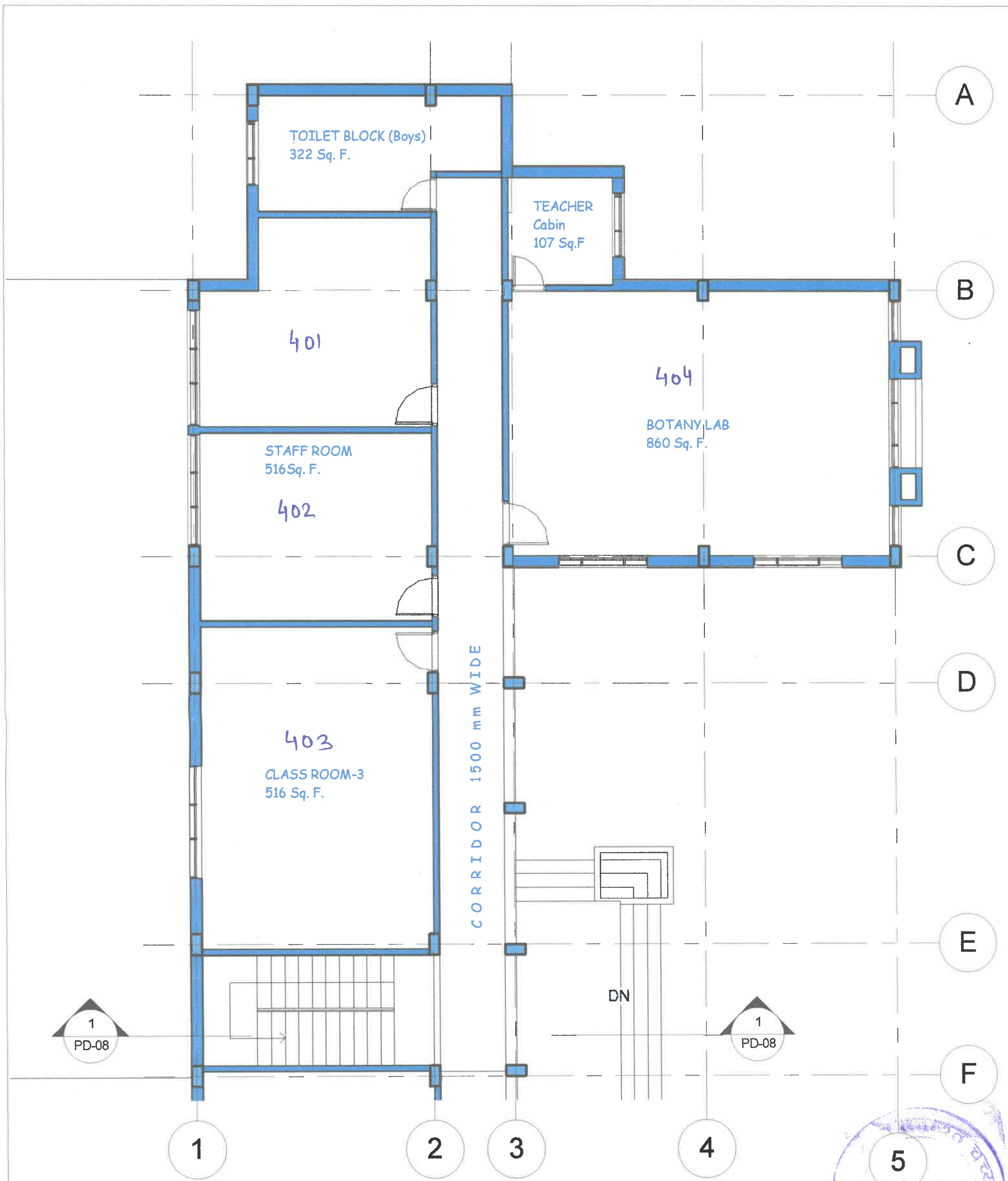
Secretary
 Abhilashi Educational Society
 Ner-Chowk, Distt. Mandi (H.P.)

Architect
 B.R. Rahi
 No. CA/2002/29975

Drg. No.
 PD-03

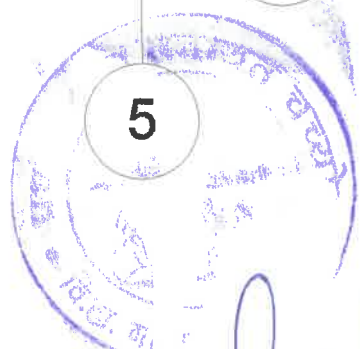
Date
 Scale As Mentioned

2-25



3. Third Floor Plan

1 : 100



Project Name
 DEPTT. OF EDUCATION & SCIENCES (ITEP)
 COURSE, ON KH. NO. 403, 65,67,74
 IN THE CAMPUS OF ABHILASHI UNIVERSITY,
 CHAILCHOWK, MANDI, H.P. (TOTAL LAND
 AREA= 5092.00 Sq. Mtrs + 3191.00 Sq. Mtrs)

AREA STATEMENT:-

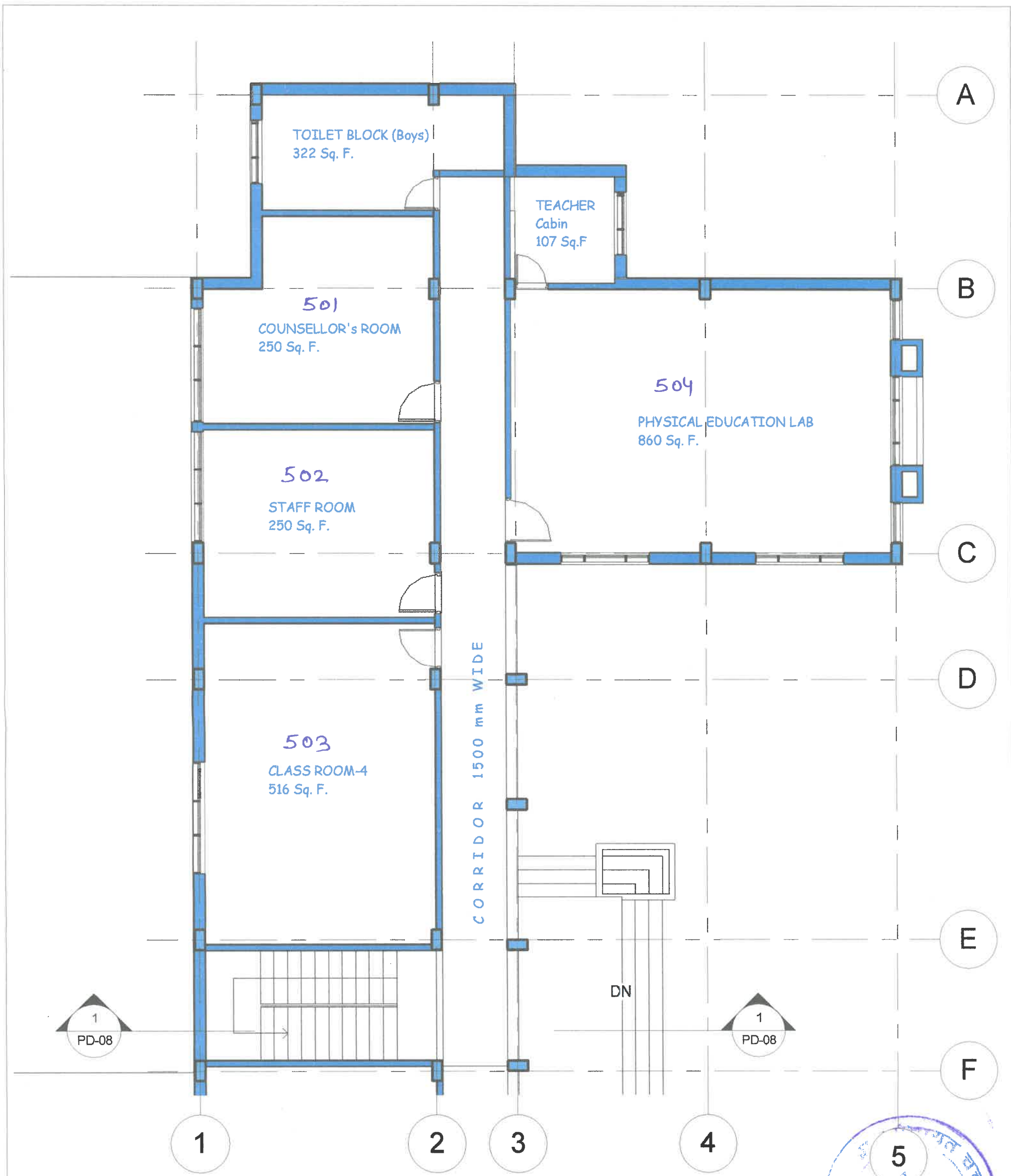
BLOCK-N

Secretary
 Abhilashi Educational Society
 Ner-Chowk, Distt. Mandi (H.P.)

Architect
 B.R. Rahi
 No. CA/2002/29975

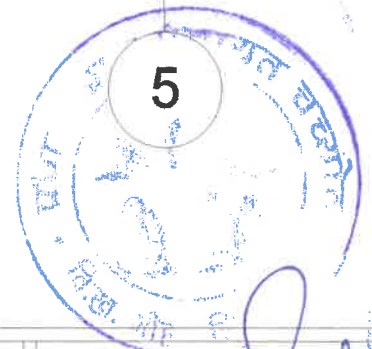
Drg. No. 20-2-25
 PD-04

Date
 Scale As Mentioned

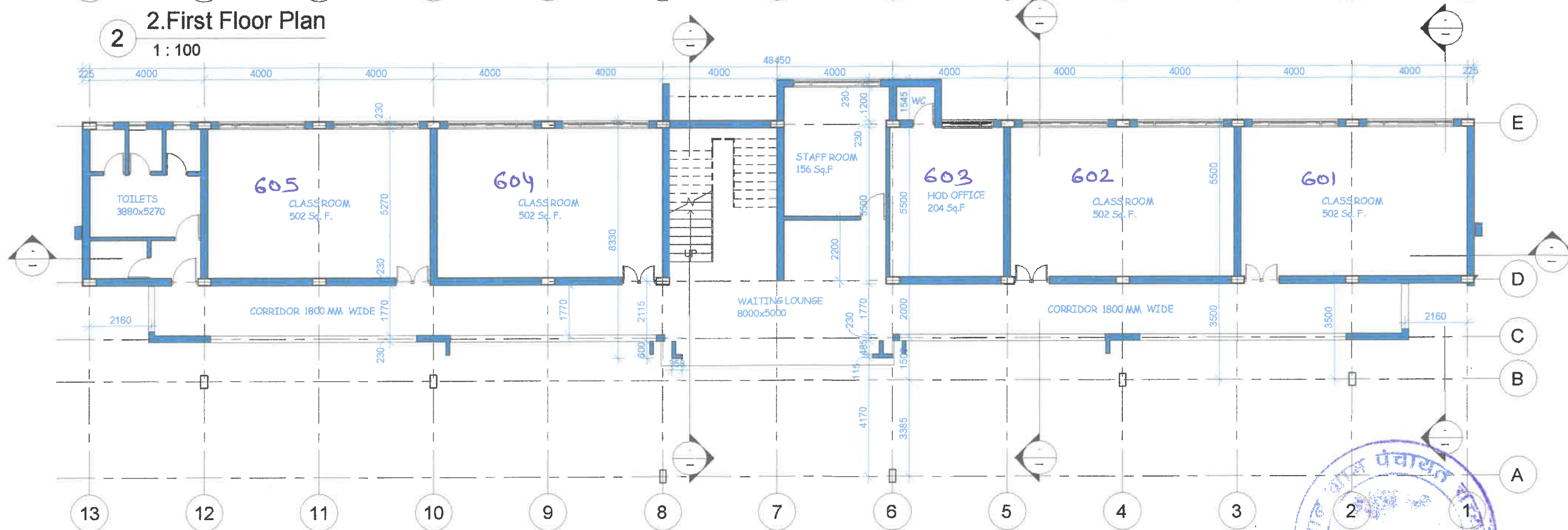
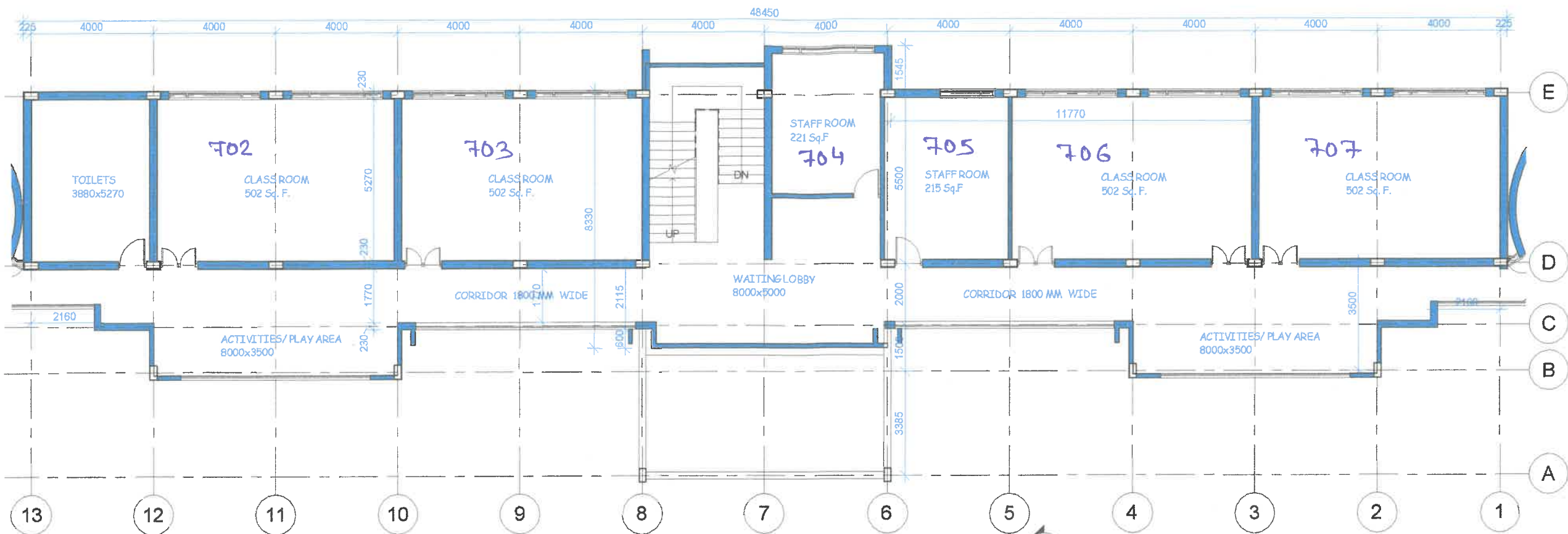


4. Fourth Floor Plan

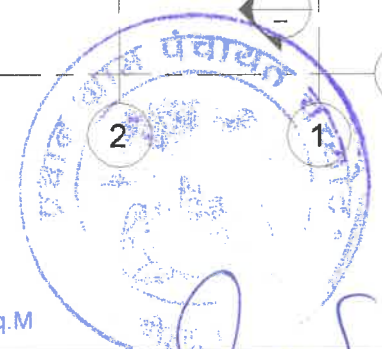
1 : 100



<p>Project Name DEPTT. OF EDUCATION & SCIENCES (ITEP) COURSE, ON KH. NO. 403,65,67,74 IN THE CAMPUS OF ABHILASHI UNIVERSITY CHAILCHOWK, MANDI, H.P.(TOTAL LAND AREA= 5092.00 + 3191.00 Sq. Mtrs)</p>	<p>AREA STATEMENT:- Secretary Abhilashi Educational Society Ner-Chowk, Distt. Mandi (H.P.)</p>	<p>BLOCK-N Architect B.R. Rahi No. CA/2002/29975</p>	<p>Drg. No. PD-05 Date Scale As Mentioned</p>
--	---	---	--



AREA STATEMENTS:-
 1. GROUND FLOOR PLAN: 336.00Sq.M
 2. 1ST+ 2ND FLOOR PLAN: 336x2= 672.00 Sq.M
 3. THIRD FLOOR PLAN: 247.00 Sq.M
 TOTAL COVERED AREA OF BLOCK-M= 1255.00 Sq.M



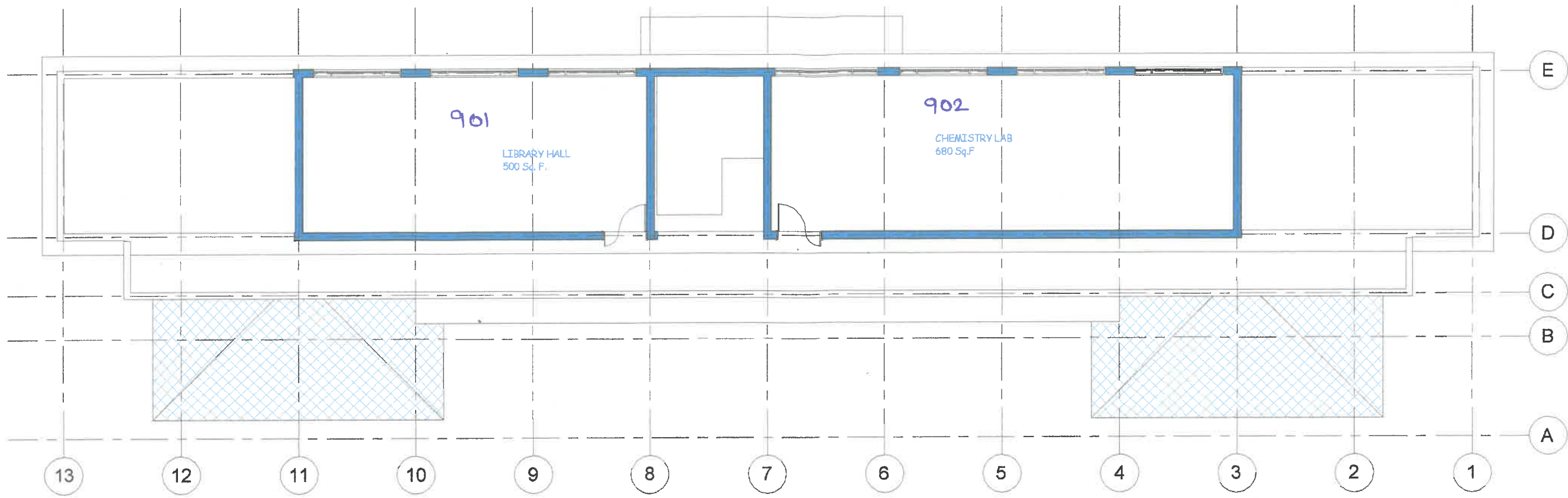
Project Name
 DEPTT. OF EDUCATION & SCIENCES (ITEP COURSE) IN THE CAMPUS OF ABHILASHI UNIVERSITY
 AT CHAIL- CHOWK , DISTT. MANDI, HIMACHAL PRADESH (KH. No.403, 65,67,74)
 TOTAL LAND AREA= 5092.00 + 3191.00 SQ. Mtrs.

Secretary
 Abhilashi Educational Society
 Ngr. Chowk, Distt. Mandi (H.P.)
 S/G. OF AUTHORITY

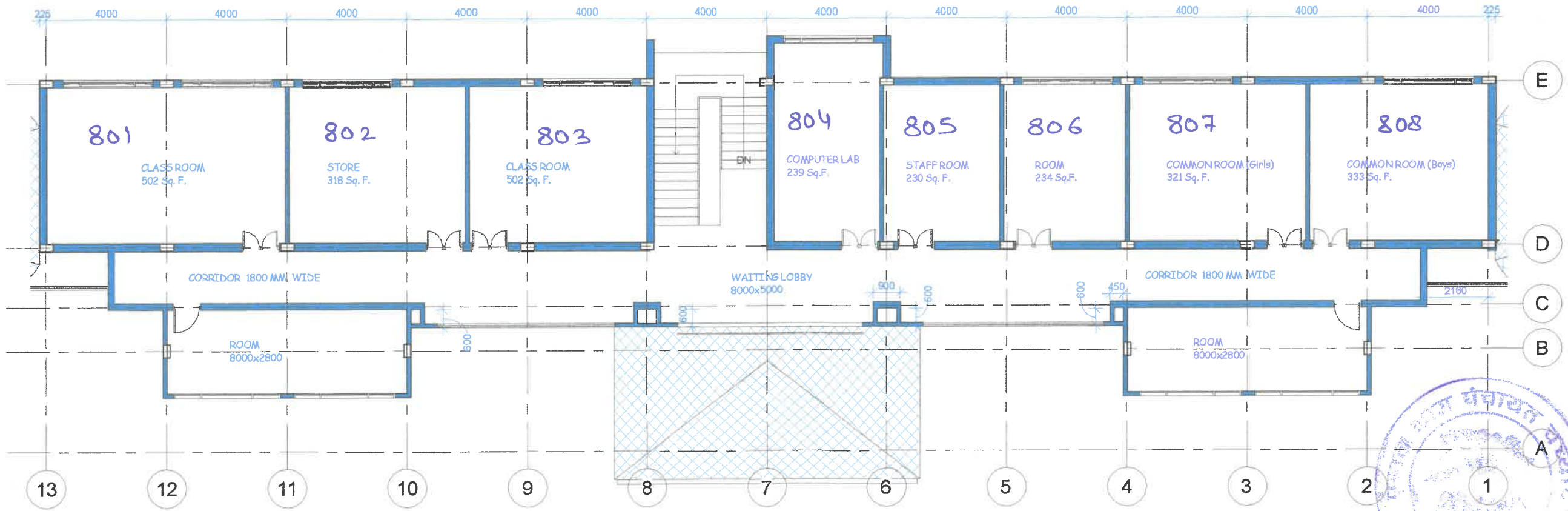
Architect
 B.R. Rahi
 No. CA/2002/29975

BLOCK-M
 हस्ताक्षर
 दिनांक 20/07/25

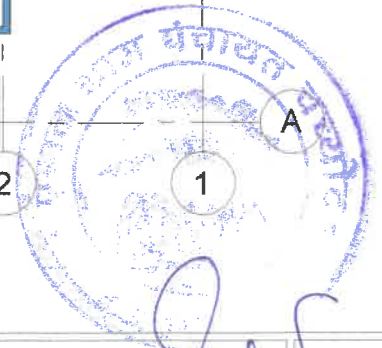
Drg. No.
PD-01
 Date
 Scale As Mentioned



2 4. Third Floor Plan
1 : 100



1 3. Second Floor Plan
1 : 100



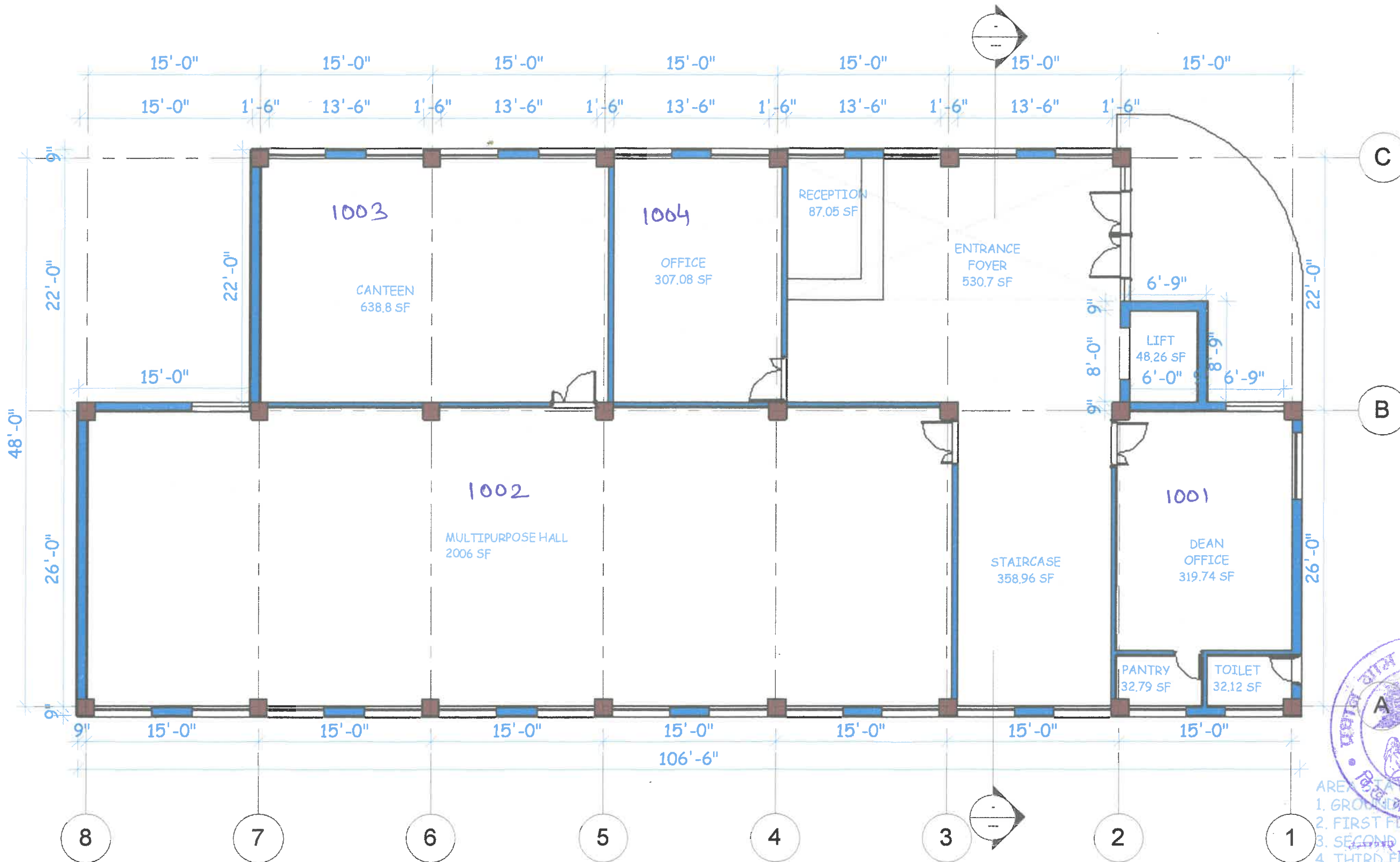
Project Name
DEPTT. OF EDUCATION & SCIENCES (ITEP COURSE) IN THE CAMPUS OF ABHILASHI UNIVERSITY
AT CHAIL- CHOWK , DISTT. MANDI, HIMACHAL PRADESH (KH. No.403,65,67,74)
TOTAL LAND AREA= 5092.00 + 3191.00 SQ. Mtrs.

Secretary
Abhilashi Educational Society
Ner-Chowk, Distt. Mandi (H.P.)
CSO OF AUTHORITY

Architect
B.R. Rahi
No. CA/2002/29975

BLOCK-M

Drg. No. PD-02
Date 20-2-23
Scale As Mentioned



AREA TAKEN BY BLOCK - O
 1. GROUND FLOOR: 1736.00 Sq. M
 2. FIRST FLOOR: 434.00 Sq. M
 3. SECOND FLOOR: 434.00 Sq. M
 4. THIRD FLOOR: 434.00 Sq. M
 TOTAL AREA: 1736.00 Sq. M
 OR 18679.36 Sq. Feet

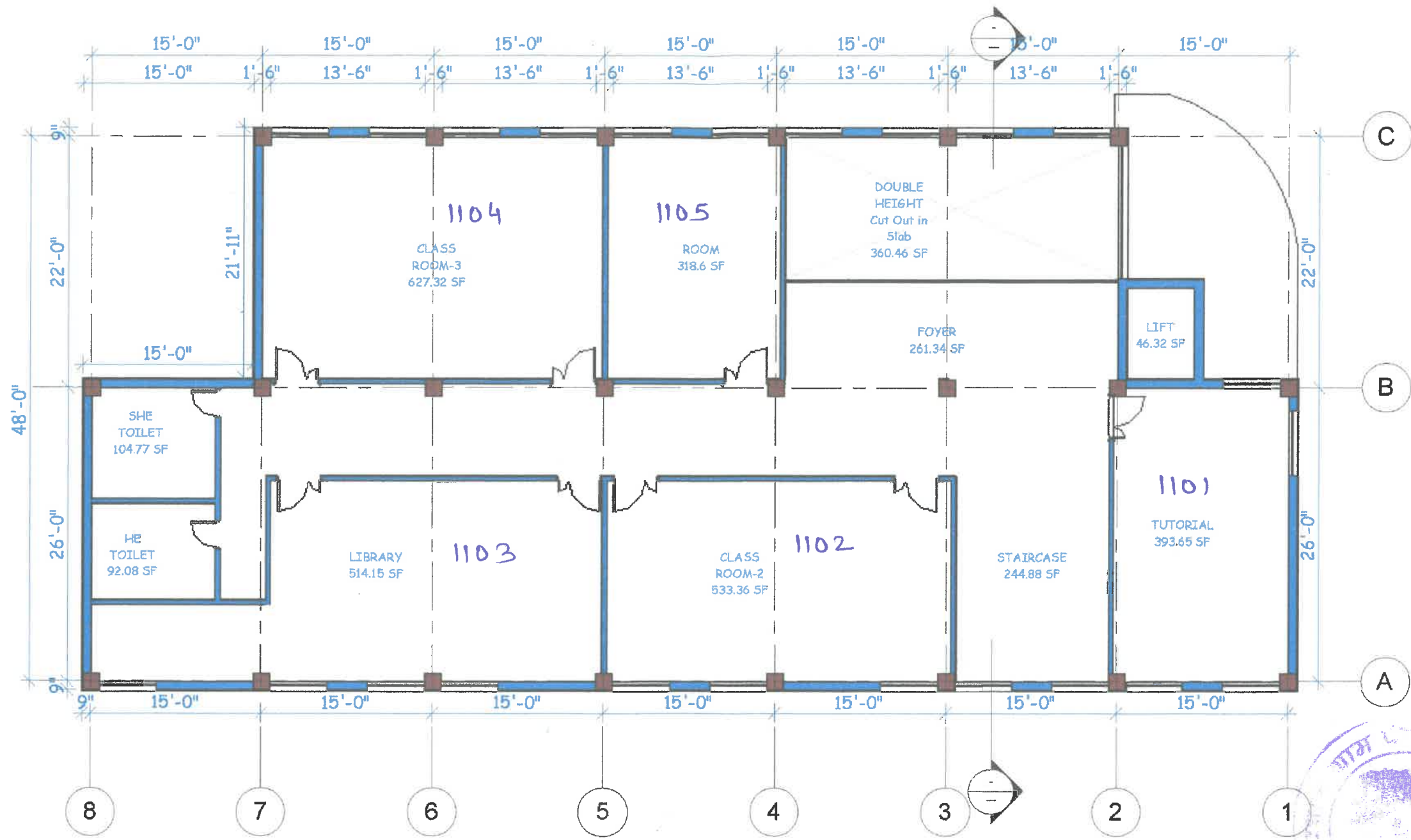
1. Ground Floor Plan
 1 : 100

Secretary
 Abhilashi Educational Society
 Near Ch. W. Distt. Mandi (H.P.)

Architect
 B.R. Rahi
 No. CA/2002/29975

Project Name
 DEPTT. OF EDUCATION & SCIENCES (ITEP COURSE) ON KH NO. 403, 65, 67, 74 IN Distt. Mandi (H.P.)
 THE CAMPUS OF ABHILASHI UNIVERSITY, AT CHAIL CHOWK, DISTT. MANDI, H.P.
 (TOTAL LAND AREA= 5092.00 + 3191.00 Sq. Mtrs)

BLOCK - O
 Drg. Title :-
 Drg. No. PD -01
 Date
 Scale As Mentioned



1 **2. First Floor Plan**
1 : 100



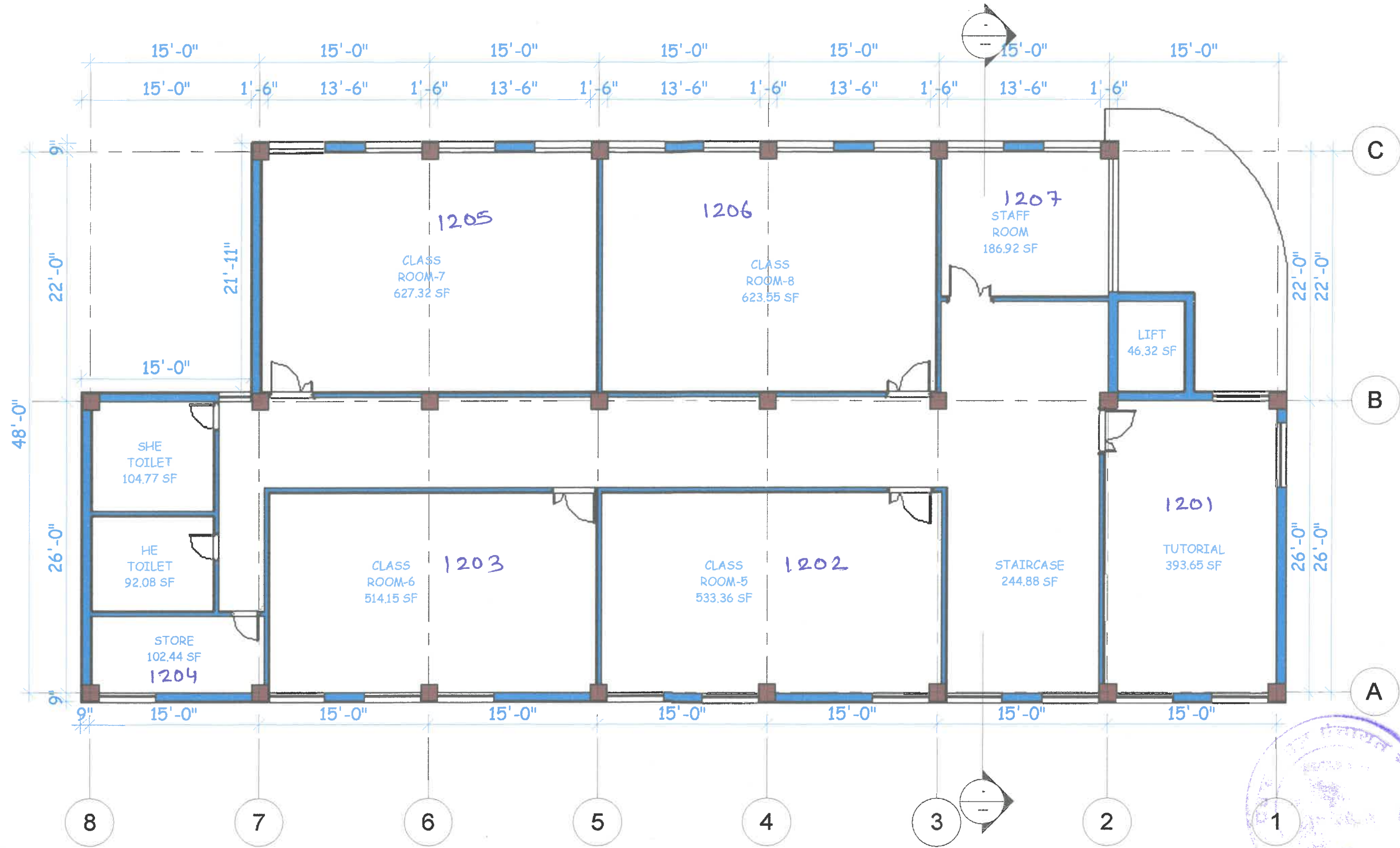
Secretary
Abhilashi Educational Society
Chail Chowk, Distt. Mandi (H.P.)

Architect
B.R. Rahi
No. CA/2002/29975

Project Name
DEPTT. OF EDUCATION & SCIENCES (ITEP COURSE) ON KH NO. 403, 65, 67, 74
THE CAMPUS OF ABHILASHI UNIVERSITY, AT CHAIL CHOWK, DISTT. MANDI, H.P.
(TOTAL LAND AREA= 5092.00 + 3191.00 Sq. Mtrs)

BLOCK - 0
Drg. Title:-

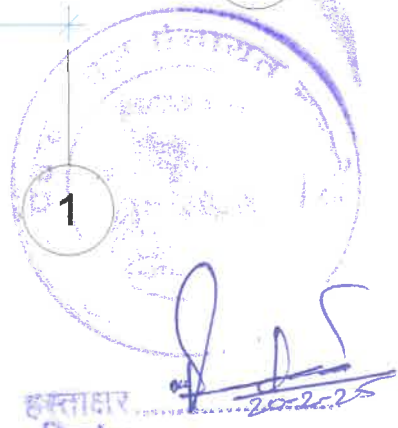
Drg. No. PD-02
Date
Scale As Mentioned



1 **3. Second Floor Plan**
1 : 100

Secretary
Abhilashi Educational Society
Ner-Chowk, Distt. Mandi (H.P.)

Architect
B.R. Rahi
No. CA/2002/29975



Project Name
DEPTT. OF EDUCATION & SCIENCES (ITEP COURSE) ON KH NO. 403, 65,67,74 IN
THE CAMPUS OF ABHILASHI UNIVERSITY, AT CHAIL CHOWK, DISTT. MANDI, H.P.
(TOTAL LAND AREA= 5092.00 + 3191.00 Sq. Mtrs)

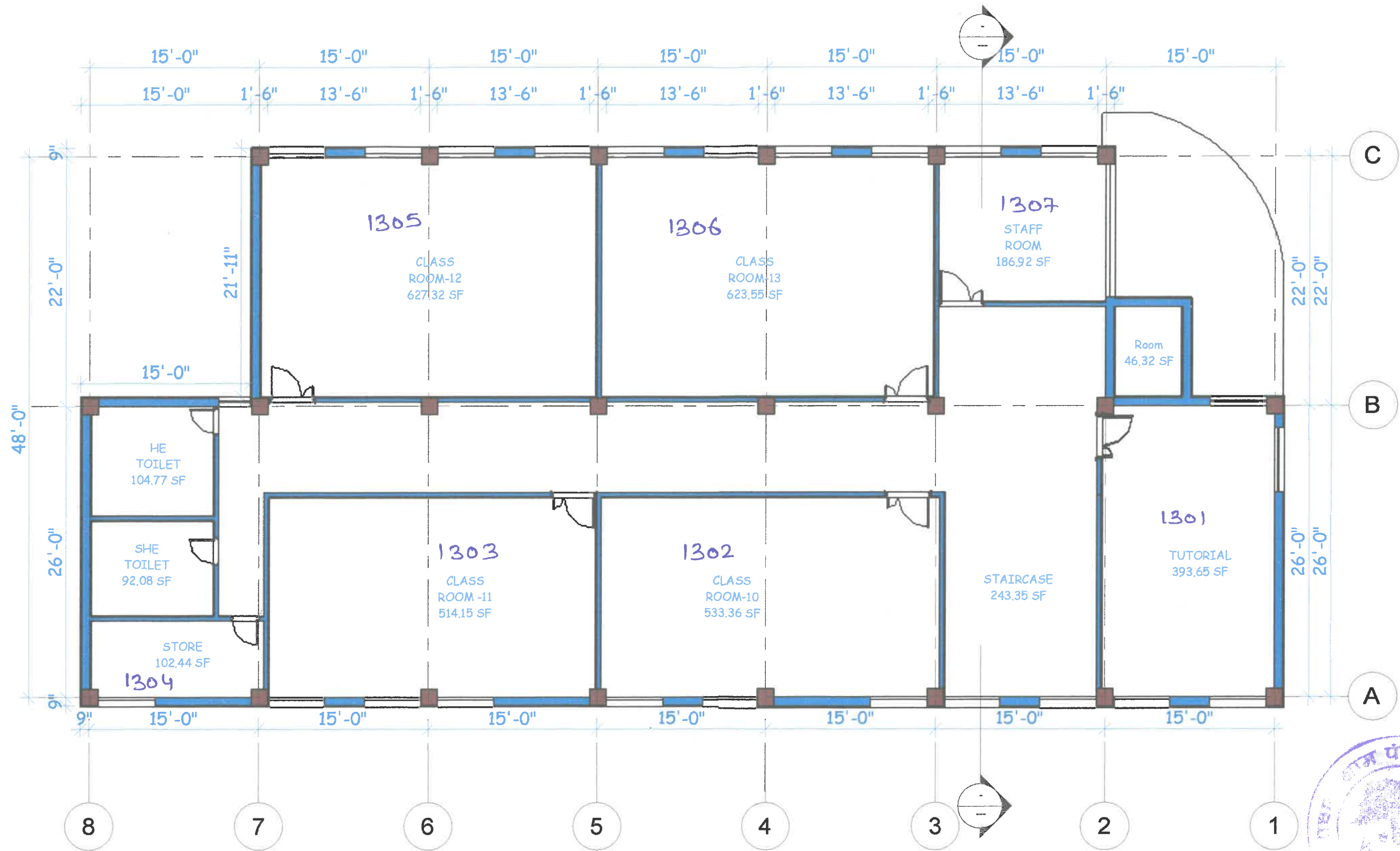
BLOCK - 0

Drg. Title :-

Drg. No. PD -03

Date

Scale As Mentioned



1 4. Third Floor Plan
1 : 100

Secretary
Abhilashi Educational Society
Ner-Chowk, Distt. Mandi (H.P.)

Architect
B.R. Rahi
No. CA/2002/29975



Project Name
DEPTT. OF EDUCATION & SCIENCES (ITEP COURSE) ON KH NO. 403, 65,67,74 IN
THE CAMPUS OF ABHILASHI UNIVERSITY, AT CHAIL CHOWK, DISTT. MANDI, H.P.
(TOTAL LAND AREA= 5092.00 Sq. Mtrs + 3191.00 Sq. Mtrs)

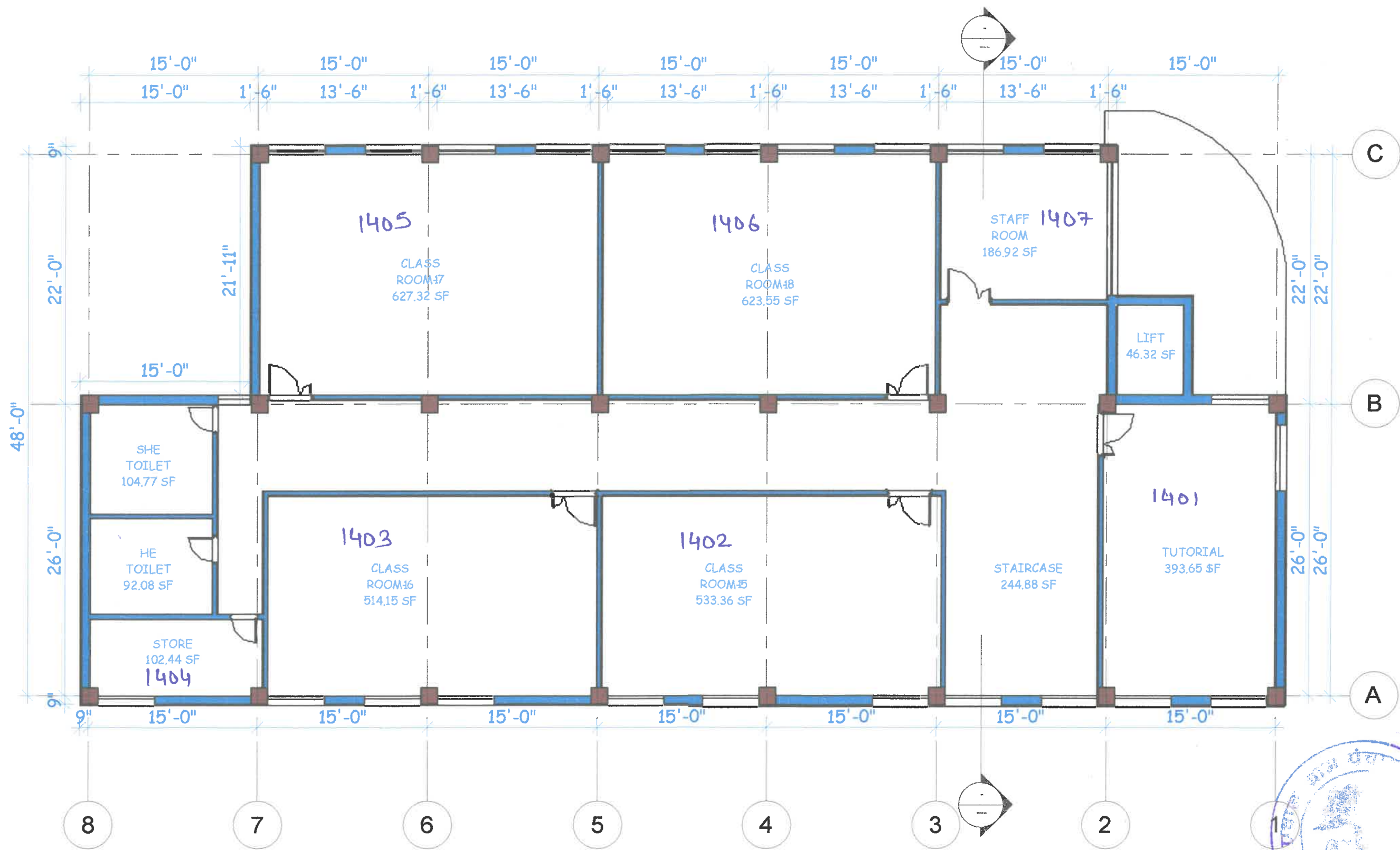
BLOCK - O

Drg. Title :-

Drg. No. PD -04

Date

Scale As Mentioned



1 **Fourth Floor Plan**
1 : 100

Secretary
Abhilashi Educational Society
Ner-Chowk, Distt. Mandi (H.P.)

Architect
B.R. Rahi
No. CA/2002/29976



Project Name
DEPTT. OF EDUCATION & SCIENCES (ITEP COURSE) ON KH NO. 403, 65,67,74 IN
THE CAMPUS OF ABHILASHI UNIVERSITY, AT CHAIL CHOWK, DISTT. MANDI, H.P.
(TOTAL LAND AREA= 5092.00 Sq. Mtrs + 3191.00 Sq. Mtrs)

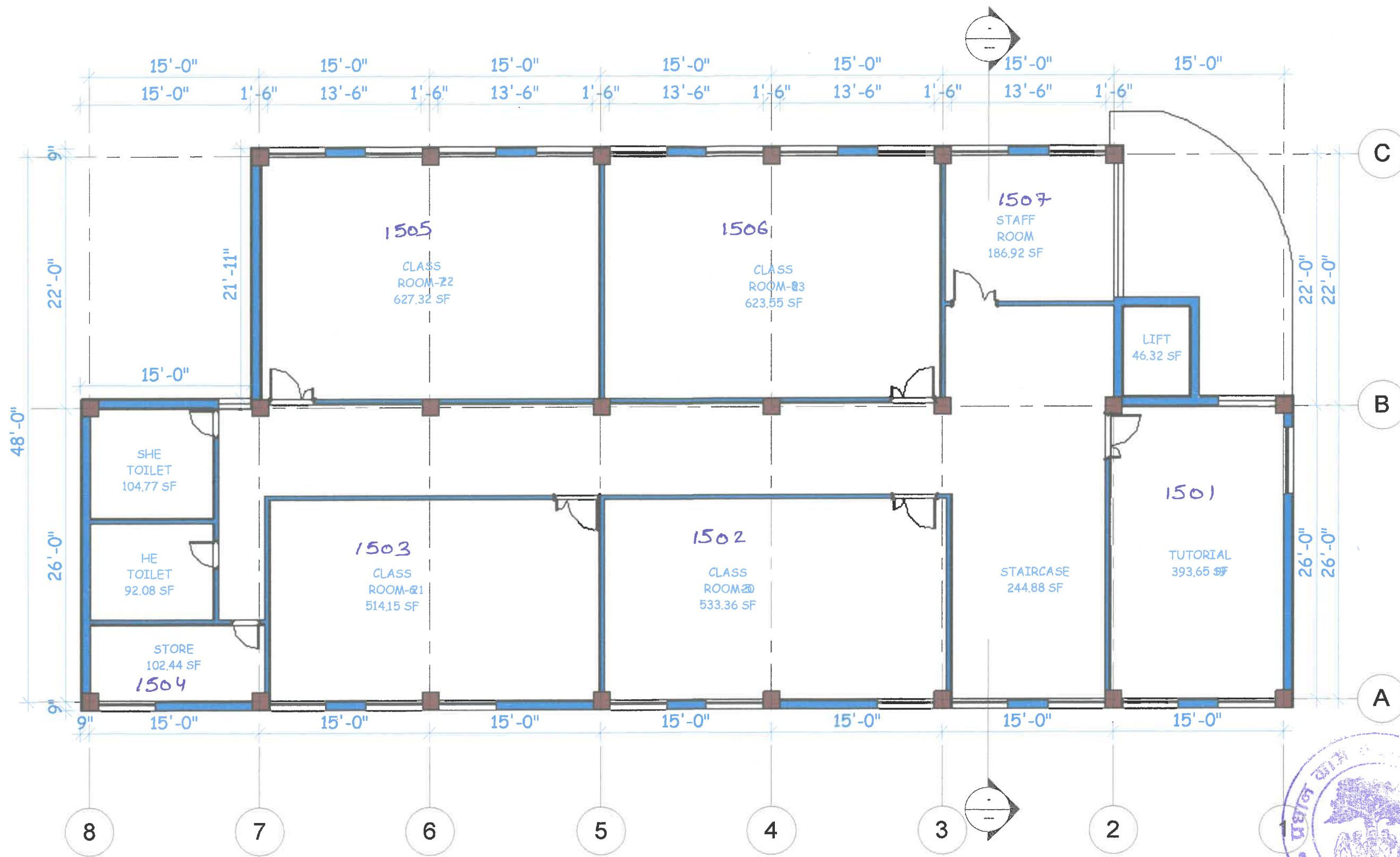
BLOCK - O

Drg. Title :-

Drg. No. PD-05

Date

Scale As Mentioned



1 Fifth Floor Plan
1 : 100

Secretary
Abhilashi Educational Society
Ner Chowk Distt. Mandi (H.P.)

Architect
B.R. Rahi
No. CA/2002/29975



Project Name
DEPTT. OF EDUCATION & SCIENCES (ITEP COURSE) ON KH NO. 403, 65,67,74 IN
THE CAMPUS OF ABHILASHI UNIVERSITY, AT CHAIL CHOWK, DISTT. MANDI, H.P.
(TOTAL LAND AREA= 5092.00 Sq. Mtr + 3191.00 Sq. Mtrs)

BLOCK - O
Drg. Title :-

Drg. No. PD -06
Date
Scale As Mentioned