



ABHILASHI UNIVERSITY

Chail Chowk, Tehsil Chachyot, Distt. Mandi (H.P.)

Ph: 01907-292611,292607 Fax: 01907-292607

Email: regabhilashi@gmail.com website: www.abhilashiuniversity.in

Feedback of Online Student Satisfaction Survey Regarding the Teaching-Learning Process:

Feedback is vital part of teaching and learning process. It helps the mentor to recognize that how the students know his/her subject being taught. This is a significant where can get better his/her teaching methodology that will finally benefit the student. Introspection and constructive criticism are the key to refinement of any process. This principle finds more relevance in a learning set up where the success of any pedagogical system, the feedback from students becomes a critical determinant of the quality of teaching. Abhilashi University, Chail Chowk, Mandi, H.P. being unique from its very inception and foundation, has emerged as a benchmark of excellence and innovation for the world of education. With quality sustenance as its focus, the IQAC of the university has developed the feedback mechanism commencing with obtaining feedback from the students, teaching staff every session for continuous improvement in curriculum development and enrichment. There is a comprehensive mechanism of obtaining the feedback and it involves three phases.

Feedback Performa

The feedback is collected in a Performa meticulously designed by IOAC. It comprises of questionnaire carrying a number of objective questions related to various aspects of the university. Most of the questions require a precise reply about various aspects of the college on a rating scale in order to procure quantitative data which can be processed further. For certain questions, the feedback is entertained in the form of remarks which constitute qualitative data. The feedback is collected from following source:

Students:

This is the most important part of feedback and is what matters the most in framing the policies of the institute. The biggest concern is the opinion of students about the quality of teachers, their study and the teaching-learning process like how much of the syllabus was covered in the class etc.

The student's feedback is

Anonymous-To encourage honest feedback without fear of reprisal from anyone.

In class- To ensure high rate of participation.

Objective- To permit data summarization and analysis.

STUDENTS FEEDBACK ANALYSIS REPORT-(2021-22)

Online Student Satisfaction Survey regarding the teaching-learning process

We have designed a form to collect the student's feedback the teaching-learning process like how much of the syllabus was covered in the class etc. We collected the data from students and twenty questions with their response values are given below.

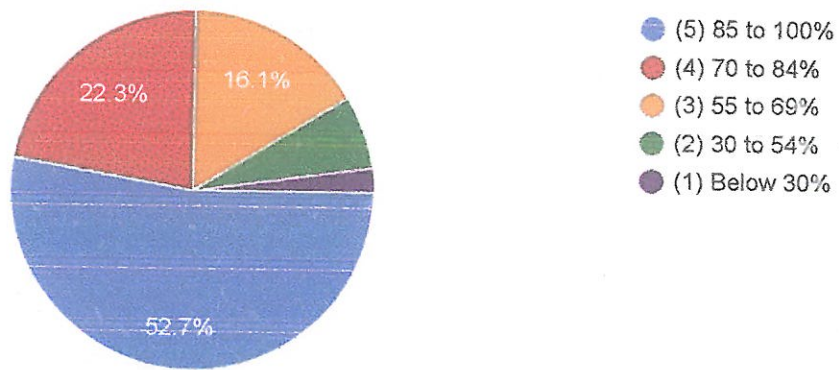
S No	QUESTIONS	(5)85 to 100%	(4)70 to 84%	(3)55 to 69%	(2)30 to 54%	(1) Below 30%
1.	How much of the syllabus was covered in the class?	52.7	22	16	7	3
2.	How well did the teachers prepare for the classes?	(5) Thoroughly	(4) Satisfactorily	(3) Poorly	(2) Indifferently	(1) Won't teach at all
		48	49.5	2	2	3
3.	How well were the teachers able to communicate?	(5) Always effective	(4) Sometimes effective	(3) Just satisfactorily	(2) Generally ineffective	(1) Very poor communication
		74	17.9	7	0	3
4.	The teacher's approach to teaching can best be described as	(5) Excellent	(4) Very good	(3) Good	(2) Fair	(1) Poor
		53.5	35.2	9.2	3	2
5.	Fairness of the internal evaluation process by the teachers.	(5) Always fair	(4) Usually fair	(3) Sometimes unfair	(2) Usually unfair	(1) Unfair
		59.7	33	16	1	3
6.	Was your performance in assignments discussed with you?	(5) Every time	(4) Usually	(3) Occasionally/ Sometimes	(2) Rarely	(1) Never
		63.4	25.3	1	12	2
7.	The institute takes active interest in promoting internship, student exchange, and field visit opportunities for students.	(5) Regularly	(4) Often	(3) Sometimes	(2) Rarely	(1) Never
		58.6	23.1	9.2	13	11
8.	The teaching and mentoring process in your institution facilitates you in cognitive, social and emotional growth.	(5) Significantly	(4) Very well	(3) Moderately	(2) Marginally	(1) Not at all
		42.1	44.7	36	9	2

9.	The institution provides multiple opportunities to learn and grow.	(5) Strongly agree	(4) Agree	(3) Neutral	(2) Disagree	(1) Strongly disagree
		46.9	41	9.5	3	1
10.	Teachers inform you about your expected competencies, course outcomes and programme outcomes.	(5) Every time	(4) Usually	(3) Occasionally/ Sometimes	(2) Rarely	(1) Never
		65.6	27.1	3	3	2
11.	Your mentor does a necessary follow-up with an assigned task to you.	(5) Every time	(4) Usually	(3) Occasionally/ Sometimes	(2) Rarely	(1) Never
		68.5	26.4	3	2	1
12.	The teachers illustrate the concepts through examples and applications.	(5) Every time	(4) Usually	(3) Occasionally/ Sometimes	(2) Rarely	(1) Never
		69.2	26.4	2	2	1
13.	The teachers identify your strengths and encourage you with providing right level of challenges.	(5) Fully	(4) Reasonably	(3) Partially	(2) Slightly	(1) Unable to
		66.7	26	3	4	1
14.	Teachers are able to identify your weaknesses and help you to overcome them.	(5) Every time	(4) Usually	(3) Occasionally/ Sometimes	(2) Rarely	(1) Never
		62.6	28.6	4	3	1
15.	The institution makes effort to engage students in the monitoring, review and continuous quality improvement of the teaching learning process.	(5) Strongly agree	(4) Agree	(3) Neutral	(2) Disagree	(1) Strongly disagree
		50.5	41.8	4	3	2
16.	The institute/ teachers use student centric methods, such as experiential learning, participative learning and problem solving methodologies for enhancing learning	(5) To a great extent	(4) Moderate	(3) Some what	(4) Very little	(1) Not at all
		51.3	41.8	4	3	2
17.	Teachers encourage you to participate in extracurricular activities.	(5) Strongly agree	(4) Agree	(3) Neutral	(2) Disagree	(1) Strongly disagree
		54.9	34.4	8.9	3	1
18.	Efforts are made by the institute/ teachers to inculcate soft skills, life skills and employability skills to make you ready for the world of work.	(5) To a great extent	(4) Moderate	(3) Some what	(4) Very little	(1) Not at all
		53.1	38.1	4	3	2
19.	What percentage of teachers use ICT tools	(5) Above 90%	(4) 70 to 89%	(3) 50 to 69%	(2) 30 to 49%	(1) Below 29%

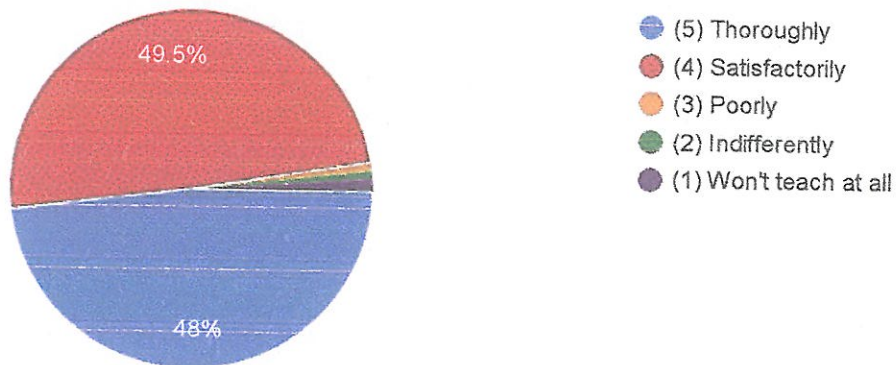
	such as LCD projector, Multimedia, etc. while teaching.	41.8	29.7	14.7	9	7.7
20.	The overall quality of teaching-learning process in your institute is very good.	(5) Strongly agree	(4) Agree	(3) Neutral	(2) Disagree	(1) Strongly disagree
		54.2	37.3	7	1	1

The cumulative score of 273 responses taken for 20 questions is obtained as

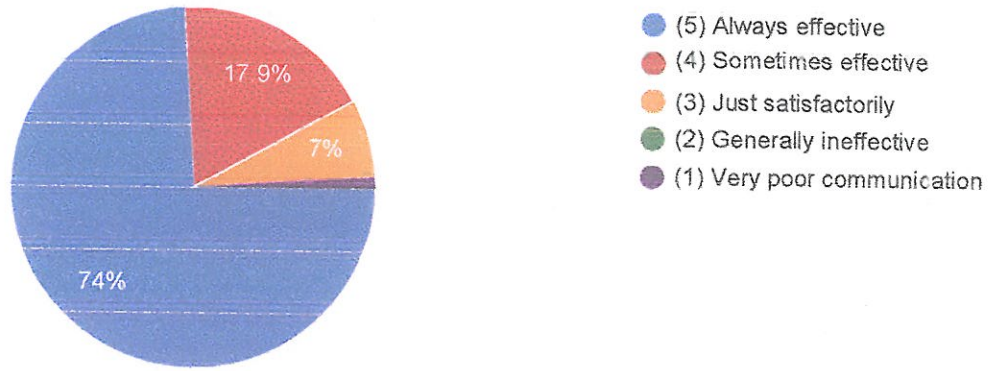
1) How much of the syllabus was covered in the class?



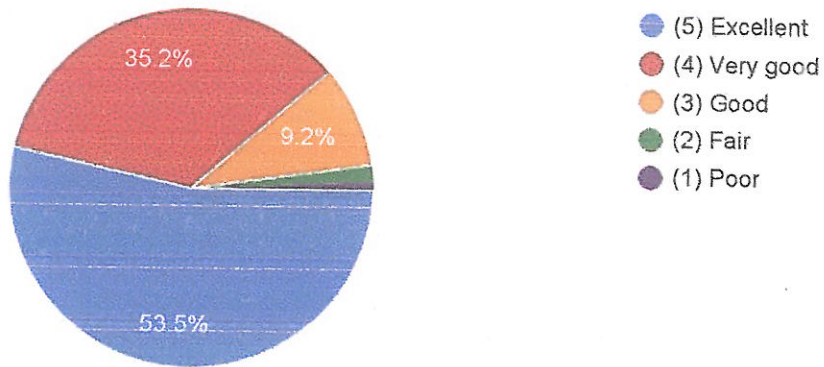
2) How well did the teachers prepare for the classes?



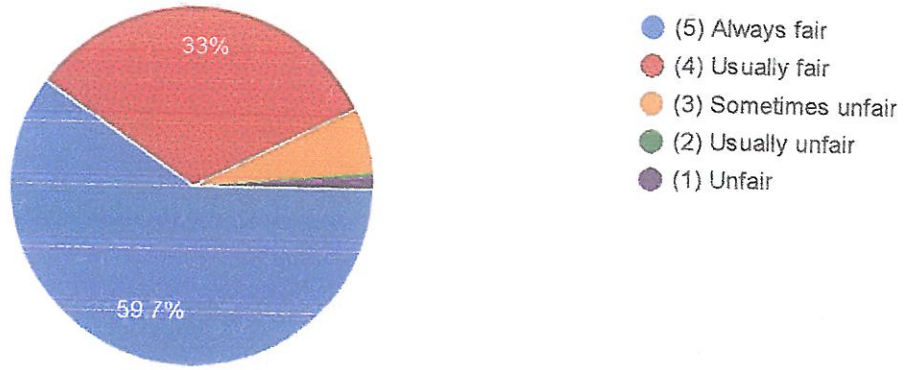
3) How well were the teachers able to communicate?



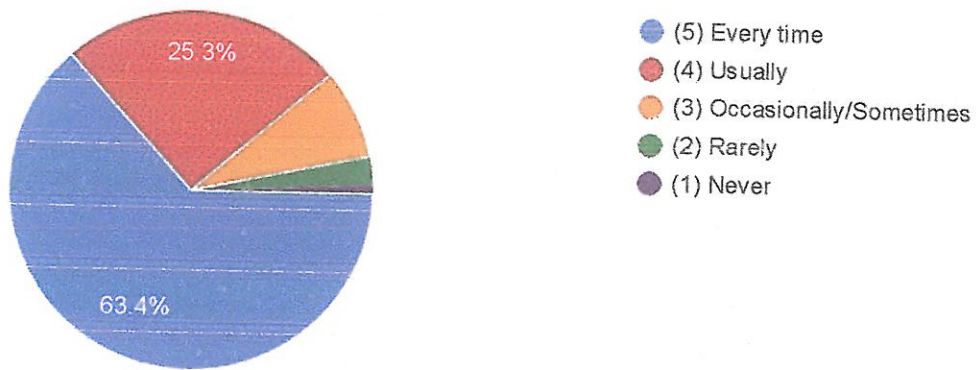
4) The teacher's approach to teaching can best be described as



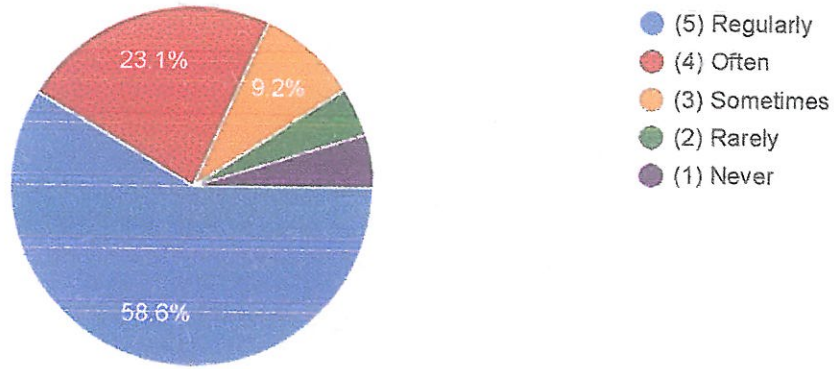
5) Fairness of the internal evaluation process by the teachers.



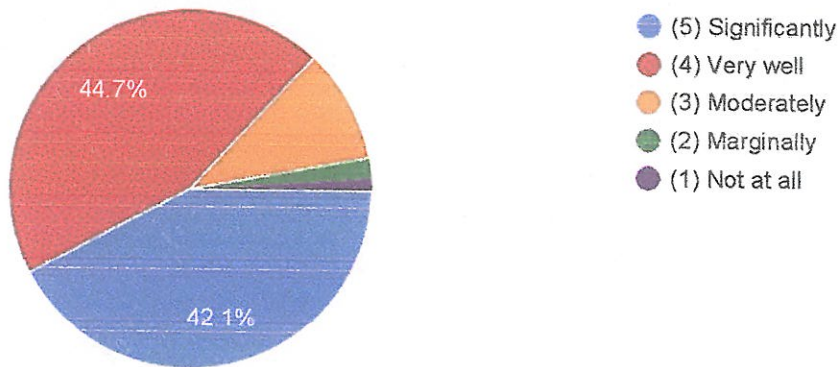
6) Was your performance in assignments discussed with you?



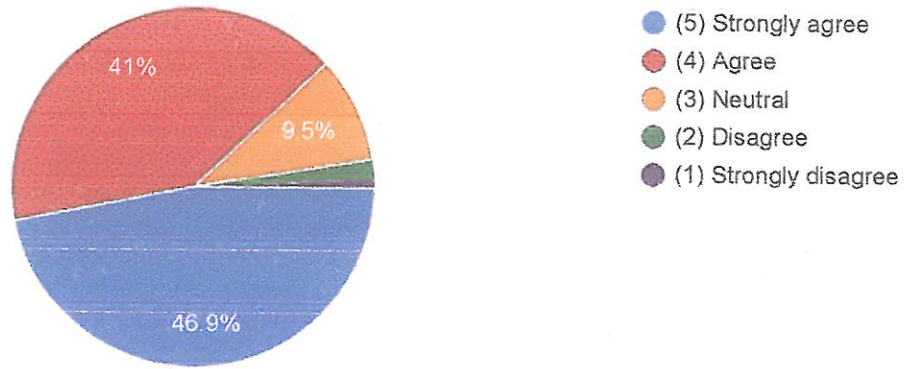
7) The institute takes active interest in promoting internship, student exchange, and field visit opportunities for students.



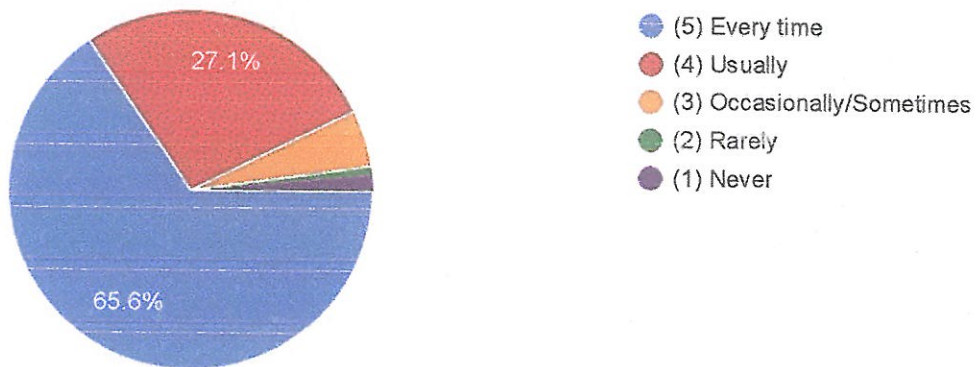
8) The teaching and mentoring process in your institution facilitates you in cognitive, social and emotional growth.



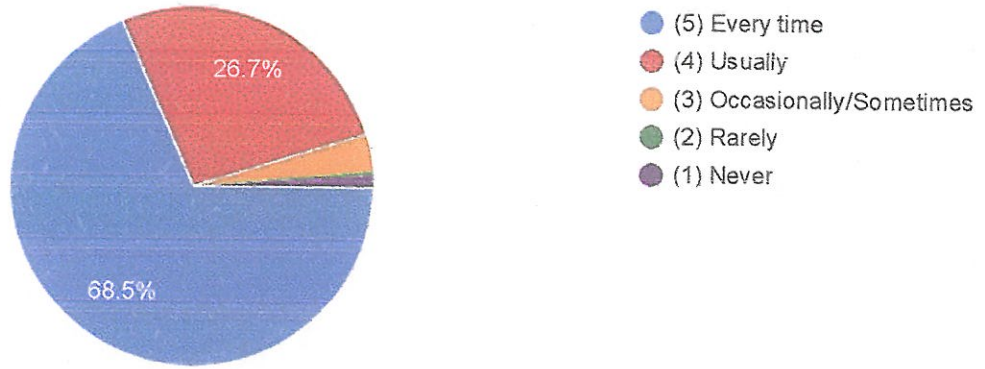
9) The institution provides multiple opportunities to learn and grow.



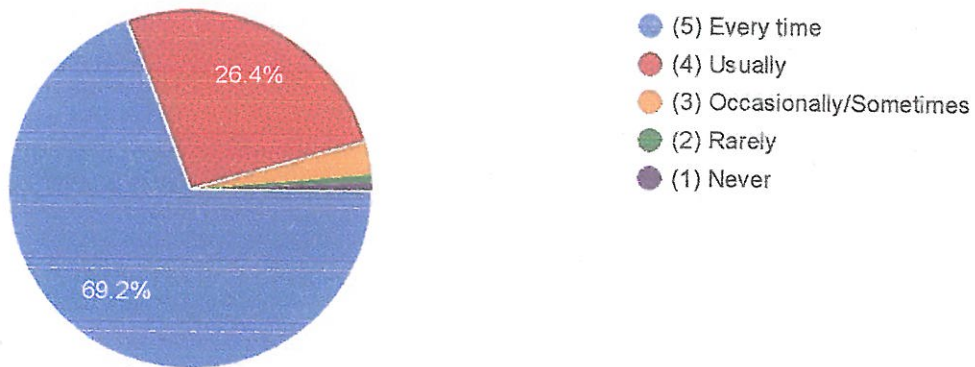
10) Teachers inform you about your expected competencies, course outcomes and programme outcomes.



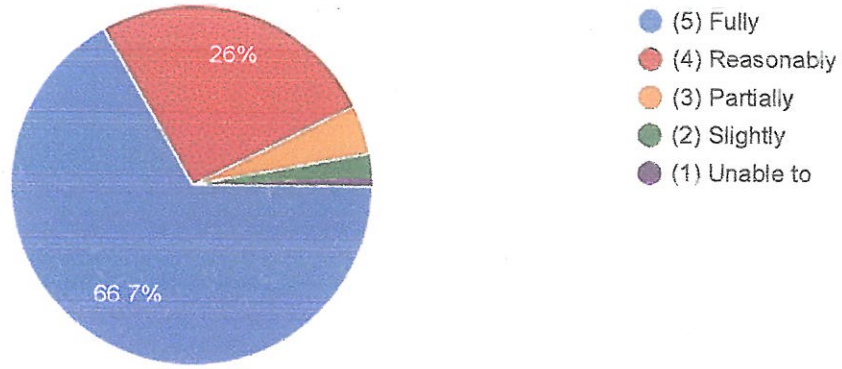
11) Your mentor does a necessary follow-up with an assigned task to you.



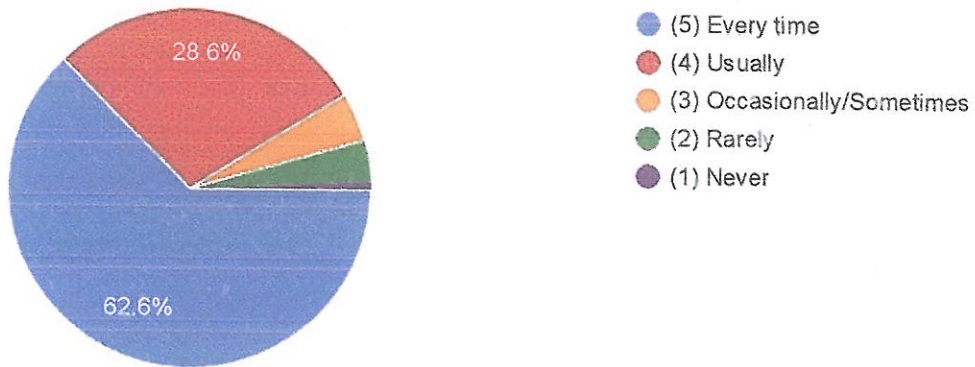
12) The teachers illustrate the concepts through examples and applications.



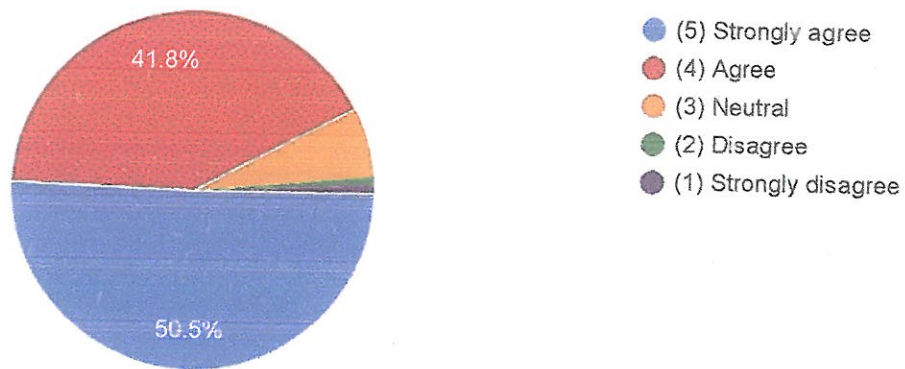
13) The teachers identify your strengths and encourage you with providing right level of challenges.



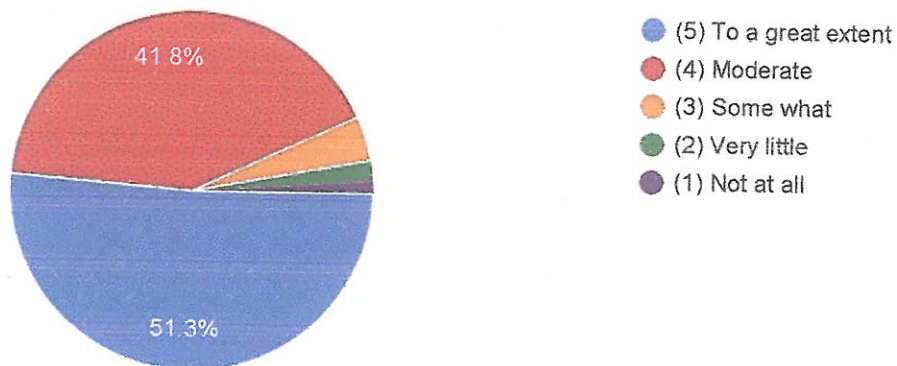
14) Teachers are able to identify your weaknesses and help you to overcome them.



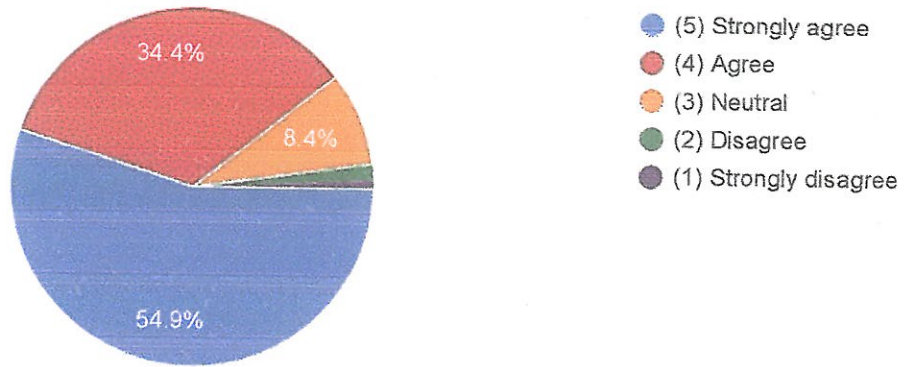
15) The institution makes effort to engage students in the monitoring, review and continuous quality improvement of the teaching learning process.



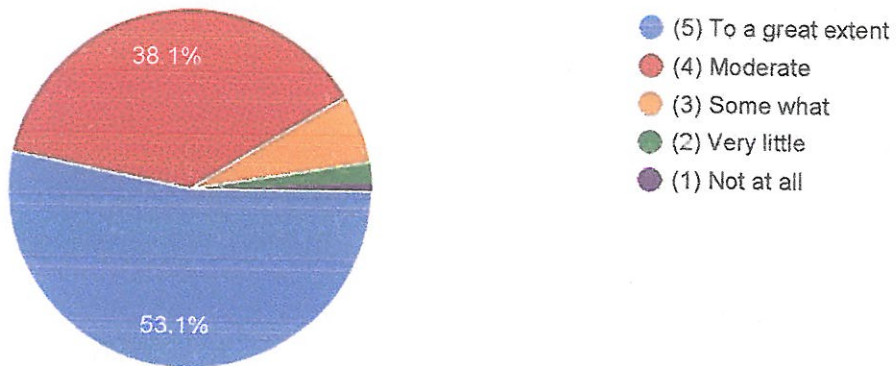
16) The institute/ teachers use student centric methods, such as experiential learning, participative learning and problem solving methodologies for enhancing learning experiences.



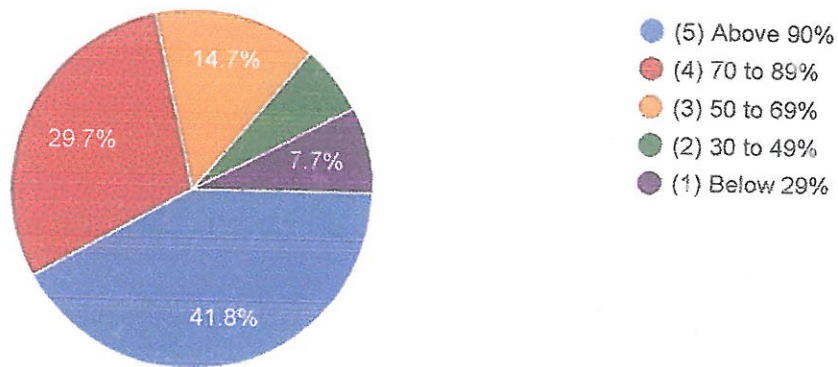
17) Teachers encourage you to participate in extracurricular activities.



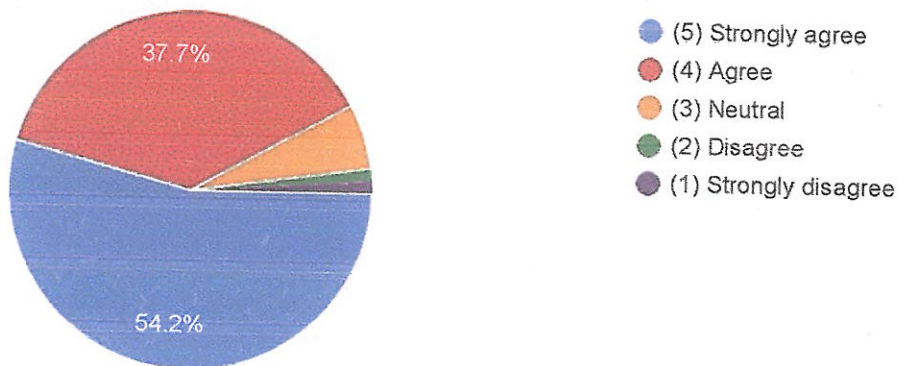
18) Efforts are made by the institute/ teachers to inculcate soft skills, life skills and employability skills to make for the world of work.



19) What percentage of teachers use ICT tools such as LCD projector, Multimedia, etc. while teaching



20) The overall quality of teaching-learning process in your institute is very good.



Sharma

Dr. Parikshit Sharma
(Director IQAC)

Director (IQAC)
Abhilashi University
Chail Chowk, Distt. Mandi (H.P.)



ABHILASHI UNIVERSITY

Chail Chowk, Tehsil Chachyot, Distt. Mandi (H.P.)

Ph: 01907-292611,292607 Fax: 01907-292607

Email: regabhilashi@gmail.com website: www.abhilashiuniversity.in

Action Taken Report (ATR) of Online Student Satisfaction Survey Regarding the Teaching-Learning Process:

Sr.No.	Issues Raised	Action Taken
1.	Few students suggested to increase percentage of teachers use ICT tools such as LCD projector, Multimedia, etc. while teaching.	The suggestions obtained by the student's feedback regarding the improvement of percentage of teachers use ICT tools such as LCD projector, Multimedia, etc. while teaching was taken seriously by the management and the necessary direction were given to officials.
2.	Few students suggested promoting internship, student exchange, field work, mentoring system and program outcome.	The suggestions obtained by the student's feedback regarding the improvement of promoting internship, student exchange, field work, mentorship and program outcome was taken seriously by the management and the necessary direction were given to officials.

Sharma

Dr. Parikshit Sharma
(Director IQAC)

Director (IQAC)
Abhilashi University
Chail Chowk, Distt. Mandi (H.P.)